

Welcome to..

The College at Braintree
Foundation and Supported Studies

Steps 3 & Steps 4

Welcome & Induction 2020

Click image below to open video in YouTube

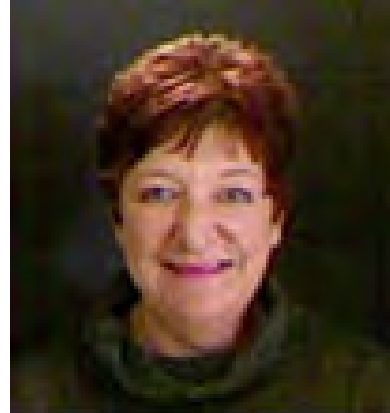


Better Careers Begin Here

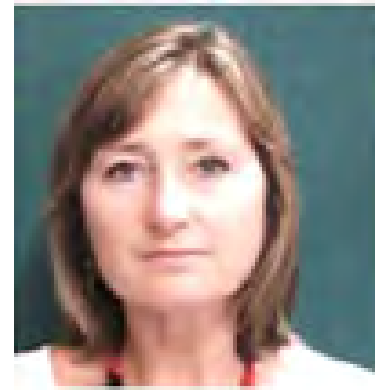
Your Tutors



Emma Mitchell Dawson



Angie Thowney



Zoe Lofthouse



Kirsty Wright

Welcome & Induction 2020

College Campus

Explore **#BraintreeCampus**

Better Careers Begin Here

Welcome & Induction 2020

Explore the Campus in 3D



Better Careers Begin Here

Topics covered at college

Customer Service Skills

Work Experience

Communication Skills

Food Safety & Hygiene

Health & Safety

Enterprise

Maths

Group Tutorials

English

Kitchen Skills

Employability

Team Building

Welcome & Induction 2020

Work experience placements

halfords



The Superdrug logo, featuring a white five-pointed star on a pink square background, with the word "Superdrug" in a white, cursive font below the star.



MARKS &
SPENCER

Better Careers Begin Here

Where students progress to

- Employment
- Level 1 Courses
- Level 2 Courses
- Continue on to next level up within area

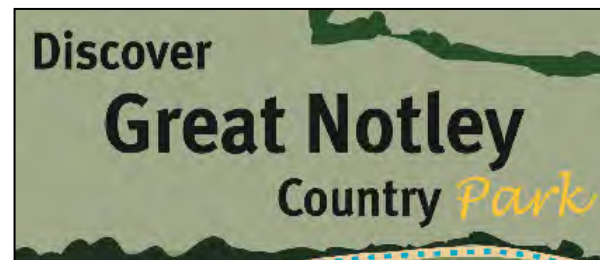
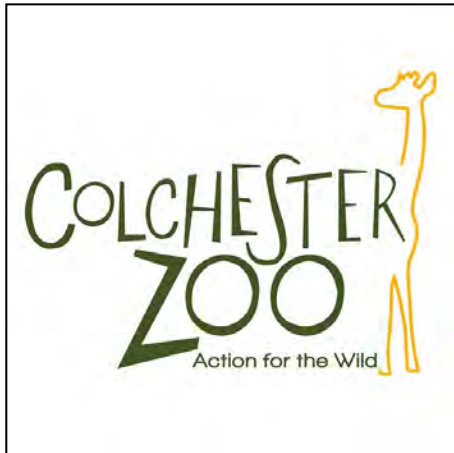
Welcome & Induction 2020

What else will we do?



Better Careers Begin Here

What trips do we go on?



Questions



If you would like us to call you, please email us your number. We will be happy to ring you back.

If you have any further questions please contact:

FSLBraintree@colchester.ac.uk

Area Head, Nicola Duke , will be offering a specific Q&A via email on Tuesday 30th June from 1-3pm to address specific questions/queries.

Email your questions to
nicola.duke@colchester.ac.uk

Welcome & Induction 2020

Questions – the answers to these may change in line with Government guidelines surrounding COVID-19

- How many days a week will I be in college?

A full time college course usually involves coming to site for 3 days. With possible additional time for work experience or GCSE lessons

- What time will my lessons start and finish?

Hours vary within 9am to 4pm

- Who will be my Key tutor?

You will be taught by a small team of staff. This will vary to your timetable. Your welcome to approach any staff member that you feel comfortable talking to

- Where can I eat lunch?

You can choose between the Riverside Café (8.30-3pm), the Lunch Club room or outside on benches

- Can I have my mobile phone/electrical devices onsite?

You are welcome to bring in your devices but it is your responsibility to look after it. We may use them in class as long as it is not a distraction to work.

- Is there a uniform?

No, you can wear whatever you feel comfortable in as long as it is safe for practical sessions and you have your hood/hat off in classroom sessions

- Will I need an ID badge?

When you enrol you will be issued with a photo ID badge. You will need this for access to site, use of copiers and for payment of food in the canteen

- Where can I get information on funding?

sswelfare@colchester.ac.uk.

- What are my start and end dates?

<https://www.colchester.ac.uk/your-next-steps/#your-first-day>

- How many people will be in my group?

Usually group size are between 10 to 15

- What support will I get with?

Whilst at college you will be supported by Tutors, Learning Support, Student Services, Job Coaches and Counsellors