

Welcome to:

## Colchester Institute Electrical Installations (Colchester and Braintree Campus)

## The aim of this presentation:

- To inform you about the course, the course structure and to help you in your understanding of the course you have applied for and will be enrolling on.

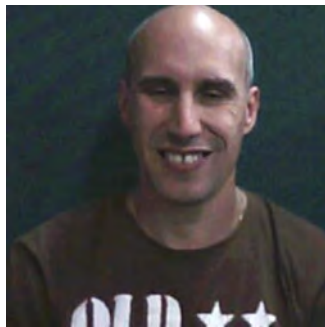
## The Colchester Team:

James Baker - Area Head

Chris McWhinney - Deputy Area Head



Steve Pratt



Steve Wordingham



Martin Ayling



Stuart Mansfield



Carmine Sagnella



Steve Coley



Dave Stubbins

## The Braintree Team:

James Baker - Area Head

Chris McWhinney – Assistant Area Head



Chris Lee



Jon Barden



Chris Fitzpatrick



Peter Newton



Sally Smith

## Where will you learn?

### Colchester Campus :-

- Purpose built learning environment situated in Colchester.
  - We offer City and Guilds courses in: Level 1, Level 2, Level 3 and Apprenticeships in Electrical Installation
    - We have experienced teaching staff, with over 50yrs in education and training.

## Where will you learn?

### **Braintree Campus :-**

- New purpose built learning environment situated within relaxing surroundings
  - We offer City and Guilds courses in: Level 1, Level 2, Level 3 and Apprenticeships in Electrical Installation
    - We have experienced teaching staff, with over 50yrs in education and training.

## Where will you learn?

- **Our workshops** are built to accommodate the latest City & Guilds qualification
  - We offer full time day courses - 2.5 days a week over 1 year
  - Part time day courses
    - On completion of the course there is the opportunity to progress onto the next level course which is a further year
      - All tools and teaching material are provided by the center for use whilst learners build up their Electrical knowledge

## Once enrolled, you will need:

- To be prepared for your education with us .. You must provide note pads, pencils, pens highlighters and a portfolio folder. You will also need a course text book.
  - Suitable foot wear with toe protection
    - Overalls or work wear are recommended when timetabled for workshop

(<https://www.screwfix.com/c/safety-workwear/workwear/cat850328>)



## Electrical Installations

- As part of your program of study you will be expected to undertake individual and group tutorials with your progress and destination tutor, who is your point of contact for any support you require.
  - You will also be required to take part British values and Safeguarding lessons and online exams
    - Our entry requirements are GCSE 4 and above in English and Maths

Should you require any further information please look out for our Q&A sessions

## What will I need to bring if I am accepted onto the course?

In the workshop you will need to wear:

- Work wear/overalls
- NOT old jeans or tracksuit bottoms
- Steel Toe Capped Boots/Shoes



## What will I need to bring if I am accepted onto the course?

In the classroom you will need to bring:

- Stationery such as: Pens, Pencils, Paper and a folder to put your work in.
- You will also need to purchase the text book that has been written for this course to help you with your studies and revision. (Please find the textbook on the link below)



<https://www.amazon.co.uk/Site-Guide-7671-Electrical-Regulations/dp/1785614428>

(you don't have to purchase this from amazon if you would prefer to use a different supplier)

## What this course requires from you!

- 1) CONCENTRATION
- 2) EFFORT
- 3) ATTENDANCE
- 4) HOMEWORK
- 5) PASSING CITY AND GUILDS ASSESSMENTS

## The Level 1 Electrical Installations Course

- The course is 1 Year long and this is the first year of the qualification.
- There are 3 Areas of Study:

↓  
Theory

↓  
Practical

↓  
GCSEs

- These are run side by side, during your 3 days at college.

## English and Maths GCSE

- You will be required to attend GCSE retakes if you failed to obtain grade 4 in Maths and English at school
- **YOU ARE REQUIRED TO ATTEND THESE LESSONS AS THEY FORM PART OF THE ELECTRICAL COURSE**

## Work Experience

**As part of the course you will also need to complete:**

30 hours of Work Experience each year outside of College times. This is part of your preparation for full time employment once you have completed your College course

This, if possible, would be in the Electrical Trade.

## Progression onto Level 2

Progression is important throughout the course. Progression is:  
*'Learning at a sufficient rate to achieve your target'*

From Level 1 you can progress onto Level 2 if your work and behaviour are good. Passing Level 1 does not guarantee progression onto Level 2. This is subject to a review panel looking at your overall achievement, attendance, attitude, aptitude etc.



## Theory Sessions

For the theory sessions you will need to:

- Take good notes
- Ask questions
- Be attentive and focus fully

These notes will be your course revision notes and will form most of your personal City and Guilds portfolio.

## Progress Tests

*Distinction, Merit and Pass*

In order to check your learning, you will complete a progress test at the end of every half term.

You must pass the progress tests in order to take the end of unit City and Guilds assessment.

## Practical Sessions

You will be given a work book containing practical tasks. These vary from basic tasks involving Health and Safety, to installing lighting and power circuits.

You will also undertake complex tasks and City and Guilds assessments.

## Progression from Level 2 to Level 3

On successful completion of the Level Two Electrical Installations course you may also progress onto the Level Three.

## Additional Learning Support

There is classroom support available for those who find reading and writing etc. a problem.

To qualify for this support you will need to undertake a specialist assessment, which we will organise.

Exam concessions – extra time, reader etc. are available

**Thank you for your time!**

Please feel free to ask any questions during the virtual Q&A session with Pete Newton and Jon Barden on the 29th June. Please send any questions to the email addresses below between 9am and 2pm:

[Jon.Barden@colchester.ac.uk](mailto:Jon.Barden@colchester.ac.uk)

[Peter.Newton@colchester.ac.uk](mailto:Peter.Newton@colchester.ac.uk)