


PRESERVED HERITAGE

HANNAHSTARLING





PRESERVED HERITAGE

HANNAH STARLING

THIS COLLECTION WAS INSPIRED BY ENGLISH HERITAGE, FOCUSING ON A VICTORIAN THEME. THE ART OF FLOWER PRESERVATION HAS INSPIRED AND INFORMED THE MOTIFS IN THIS COLLECTION. A ROMANTIC FEEL IS CREATED THROUGH THE DELICATE FLOWERS AND DARK COLOUR PALETTE. VICTORIAN STYLE DRESS IS ECHOED THROUGHOUT THE COLLECTION FOCUSING ON SPECIFIC FEATURES SUCH AS HIGH NECKS, DETAILED SLEEVES, AND INTERESTING SEAMS. ALSO INSPIRED BY THE DETAILS OF VICTORIAN CLOTHES, FABRIC MANIPULATION TECHNIQUES HAVE BEEN WIDELY RESEARCHED WITHIN THIS COLLECTION. THE ELEGANT FRILLS AND SHEER FABRICS USED LINK TO THE OVERALL THEME OF THE COLLECTION AS THEY MATCH THE DELICATE FEEL OF THE PRESSED FLOWER MOTIFS WITHIN THE PRINTS. THE LOCATIONS VISITED TO SELECT THE CHOSEN PRESSED FLOWERS FOLLOW ALONG THE ENGLISH HERITAGE THEME AND CAN BE FOUND IN THE ENGLISH COUNTRY SIDE AND ENGLISH GARDENS. TO ADD A MODERN TWIST TO THE COLLECTION RAW EDGES AND INVERTED SEAMS CAN BE SEEN ON THE GARMENTS. DIGITAL PRINTING IS THE MAIN FOCUS OF THE PRINT COLLECTION USING HYPER-REAL IMAGERY, HOWEVER HANDPRINTED FOIL AND FLOCK HAS BEEN APPLIED TO A SELECTION OF THE PRINT COLLECTION ADDING TO THE TEXTURED FEEL OF THE COLLECTION.



PRESERVED HERITAGE
HANNAH STARLING



PRINT DEVELOPMENT





VICTORIAN PHOTO PORTRAITING OF VICTORIAN GENTLE



NOT DRESS ABOUT 1887
PLEATS AND OUTGANG
ARE USED THROUGHOUT
THE DRESS



COLLARS OF DIFFERENT
VICTORIAN PERIODS



FROM SPRING 2017 READY-TO-WEAR



FROM SPRING 2017 READY-TO-WEAR



VALENTINO FALL 2017 READY-TO-WEAR



CHANEL COUTURE 2013



VICTORIAN BODICES



WEDDING DRESS AROUND 1881

PRESERVED HERITAGE
HANNAH STARLING



FABRIC SAMPLES



PRESERVED HERITAGE
HANNAHSTARLING



TOILE DEVELOPMENT

PRESERVED HERITAGE
HANNAHSTARLING



OUTFIT TOILE



PRESERVED HERITAGE
HANNAHSTARLING





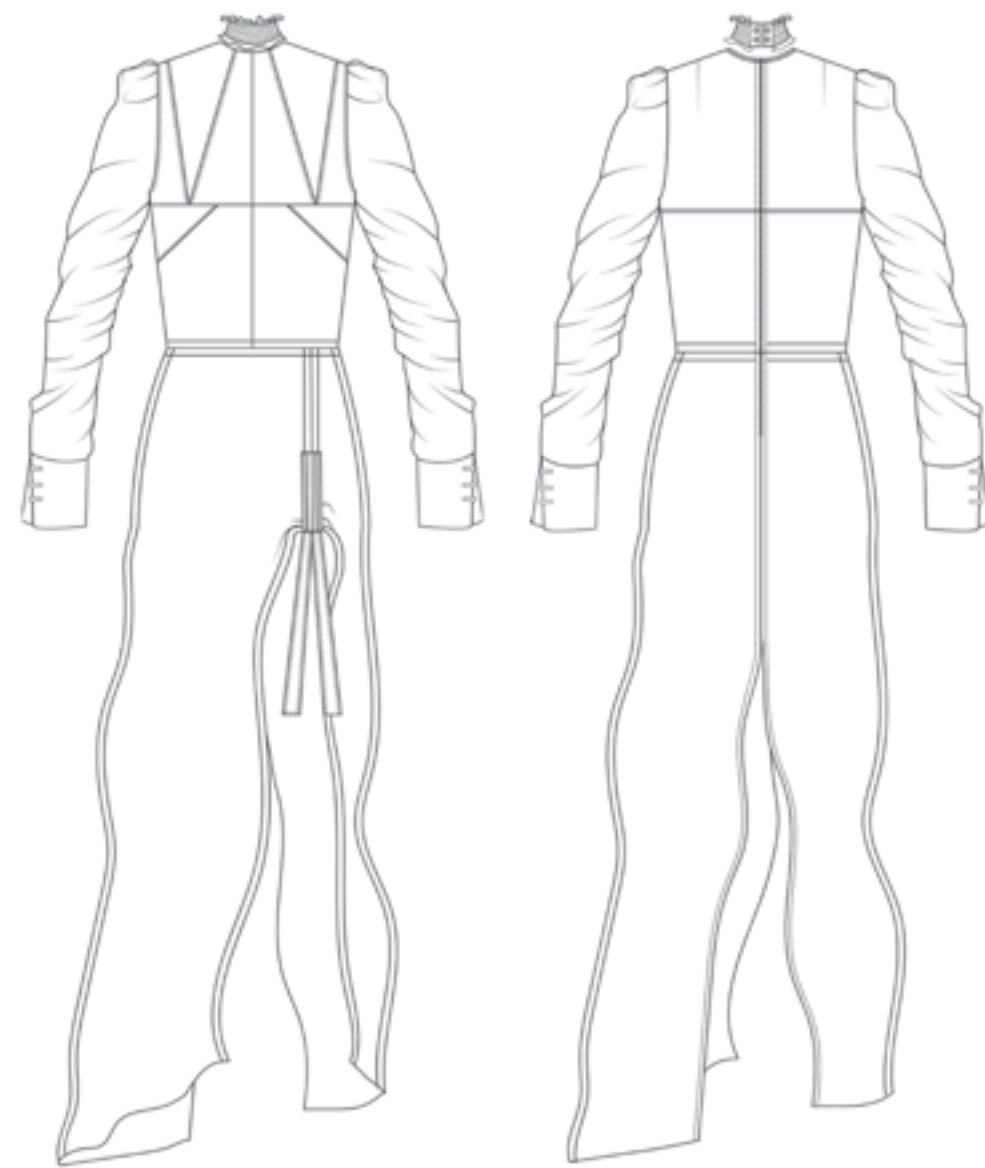
FLOWERS BEFORE BEFORE PRESSED



PRESERVED HERITAGE
HANNAHSTARLING

PRINT PLACEMENT AND SCALE

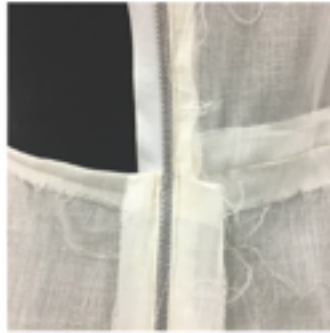
PRINTED FABRICS



GARMENT 1



CENTRE BACK OPEN ZIP



CENTRE BACK ZIP FASTENING WITH FREYED EXPOSED SEAM

HOOK AND EYE FASTENING SAMPLE



DRAW STRING ON SKIRT OF DRESS



SHEER SLEEVE WITH PEATS AT SHOULDER



SEAMS WITH CONTRASTING FABRICS ON FRONT BODICE



LONG CUFF WITH SPLIT AND EXPOSED HOOK AND EYE FASTENINGS



EXPOSED 2CM SEAM ALLOWENCE

CONTRASTING FABRICS - SHEER AND OPAQUE // SEAMS IN FRONT BODICE WITH CONTRASTING FABRICS // TWISTED SLEEVE WITH LARGE TUCKS IN SHOULDER // LARGE CUFF WITH SPLIT AND HOOK AND EYE FASTENING // FREYED EXPOSED SEAMS WITH EXTENDED SEAM ALLOWENCE TO 2CM // A LINE SKIRT WITH LARGE SPLIT AND DRAW STRING // RAW FREYED HEM // SPLIT UP CB TO ZIP FASTENING // CB ZIP OPEN END ZIP FASTENING.

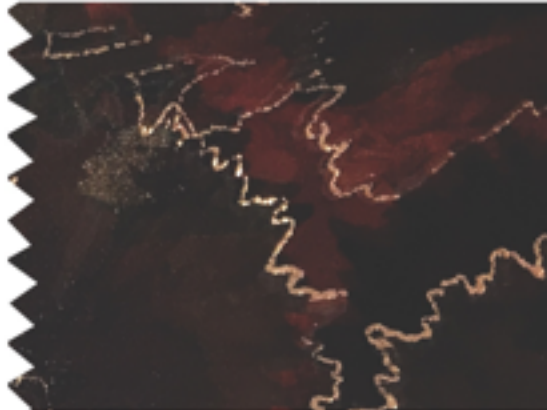




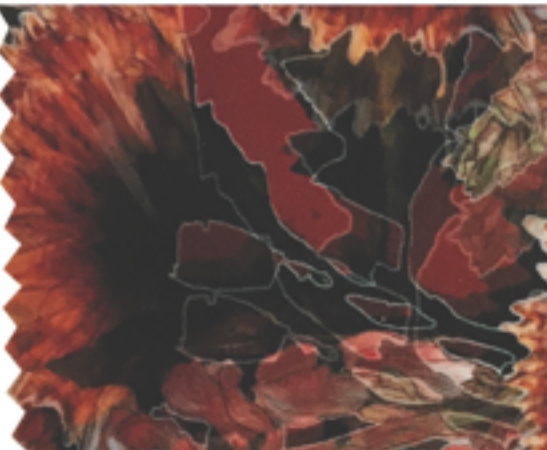
GARMENT 2



GEORGETTE



SILK



GOWL NECK // TUCKS IN HEM OF TOP SECTION // SHEER SLEEVE WITH TUCK AT SHOULDER // SEAM IN ELBOW OF SLEEVE WITH CONTRASTING PUFF SLEEVE WITH TUCKS // LINING IN PUFF SLEEVE // VERTICAL PANNELS DOWN SKIRT SECTION OF DRESS // RAW HEM FRILL IN VERTICAL PANNELS // METAL RINGS AT END OF PANNEL OVER THE THIGH // DIAGONAL SEAMS IN BACK OF BODICE WITH EXPOSED HOOK AND EYE FASTENING // INVISIBLE ZIP IN CB OF SKIRT // SHEERED ELASTIC HIGH NECK



GOWL NECK WITH SHEERED ELASTIC HIGH NECK



METAL RING FINISHING MIDDLE PANNELS OF SKIRT SECTION OF DRESS



TUCK IN SHOULDER OF SLEEVE



TUCK IN TOP HEM TO CREATE BODY



FRILLS WITH PRESSED RAW HEM



VERTICAL SEAMS ON BACK BODICE WITH EXPOSED HOOK AND EYE FASTENING DOWN CB, SMALL INVISIBLE ZIP FASTENING IN CB OF SKIRT SECTION OF DRESS



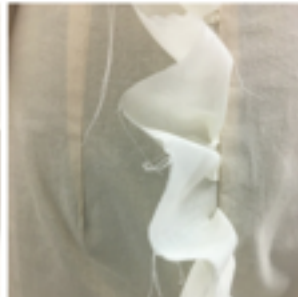
GARMENT TOILE



GARMENT 3



EYELET AND DIE FASTENING WITH SMALLER ZIP FASTENING IN CB OF SKIRT



FRILL WITH RAW FRAIED HEM



SHEERED ELASTIC CUFF



PLEATS ALONG SHOULDER AND HEM OF FRONT SECTION OF BODICE



DOUBLE FRILL IN SEAM ON SLEEVE



EXPOSED FRILL STITCHED DOWN ON OUTSIDE OF GARMENT WITH RAW FRAIED HEM

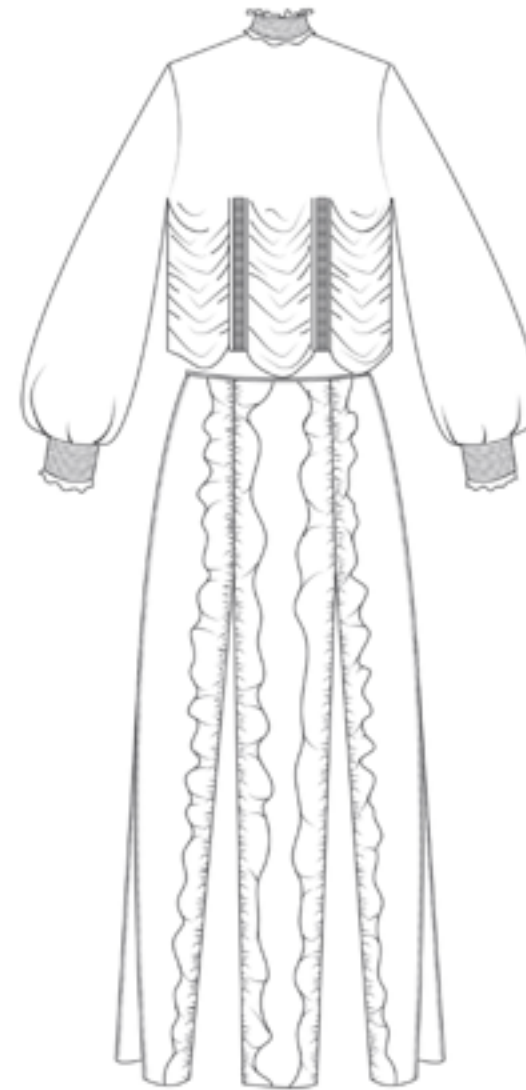


GEORGETTE



SILK

SHEERED ELASTIC HIGH NECK // TUCKS IN SHOULDER AND HEM // TUCK ON SHOULDER OF SLEEVE // DOUBLE RAW HEM FRILL ABOVE THE ELBOW ON SLEEVE // FLAP FROM CF WITH TIES FROM END OF FLAP AND CB OF THE SKIRT SECTION // FRILL FROM CF ALONG TOP OF FLAP // SPLIT DOWN CF OF SKIRT SECTION // RAW EXPOSED FRILL AROUND HEM OF DRESS // EYELET AND TIE FASTENING DOWN CB // SMALL INVISIBLE ZIP FASTENING IN CB OF SKIRT SECTION



GARMENT 4

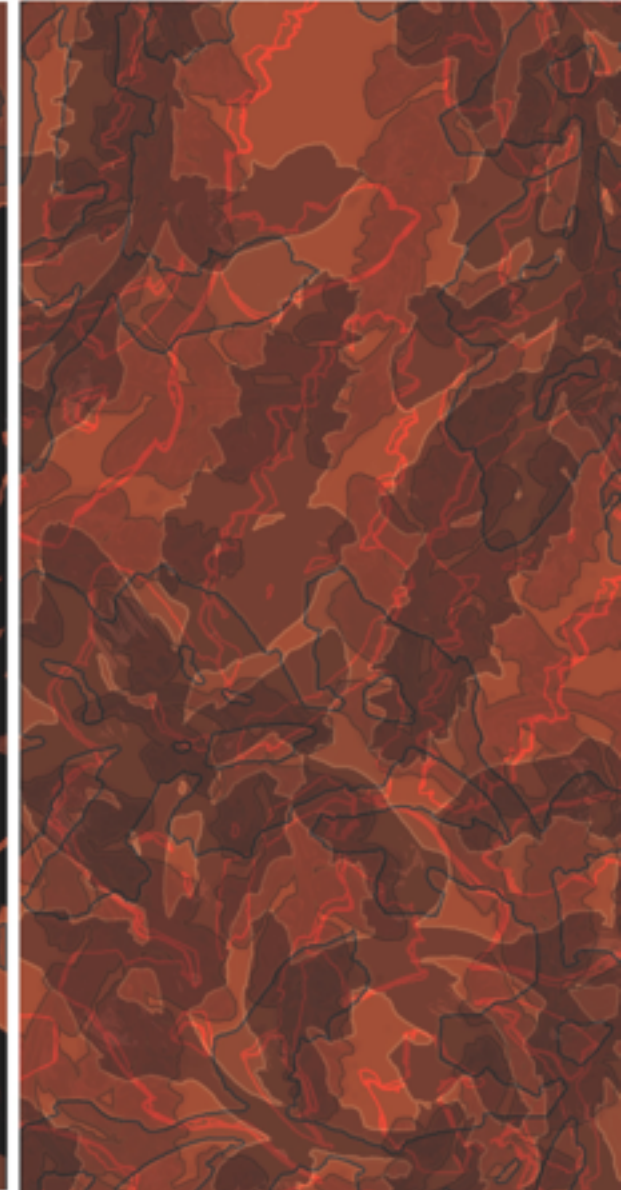
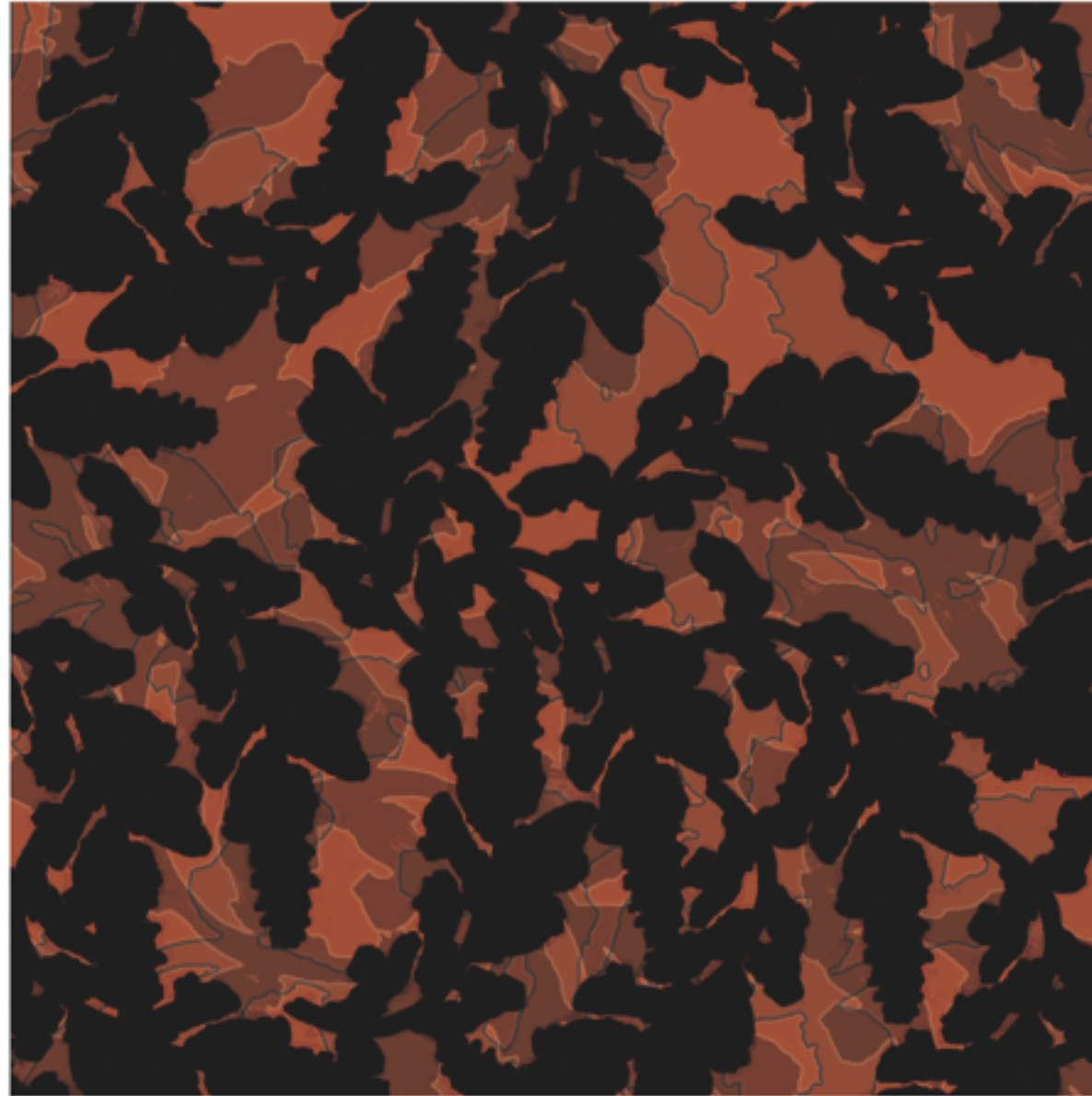


PRESERVED HERITAGE
HANNAHSTARLING



PRINT

PRESERVED HERITAGE
HANNAHSTARLING



P R I N T

PRESERVED HERITAGE
HANNAHSTARLING



P R I N T

PRESERVED HERITAGE
HANNAH STARLING



PRINT

PRESERVED HERITAGE
HANNAHSTARLING



PRINT



PRESERVED HERITAGE
HANNAHSTARLING

P R I N T

PRESERVED HERITAGE
HANNAHSTARLING



ILLUSTRATED LINE UP

PRESERVED HERITAGE
HANNAH STARLING

