



a round neckline, short kimono sleeves and a cut-out graduated hemline.
details: folding layers on the shoulders, grosgrain hem detail
fabric: a cotton-mix with a subtle texture
49% Cotton / 45% Polyamide / 6% Elastane
colour: dusky pink
length: 92cm

dress with folded shoulders
£69



colbert suede leather jacket
£425



WHISTLES

fit: fitted, short button-up design - a modern take on traditional western jacket styling
fastening: poppers, which have been dyed to match the tan suede.
pockets: two patch front pockets
details: a classic collar
fabric: 100% leather - butter-soft suede
colour: classic tan
length: 51.5cm

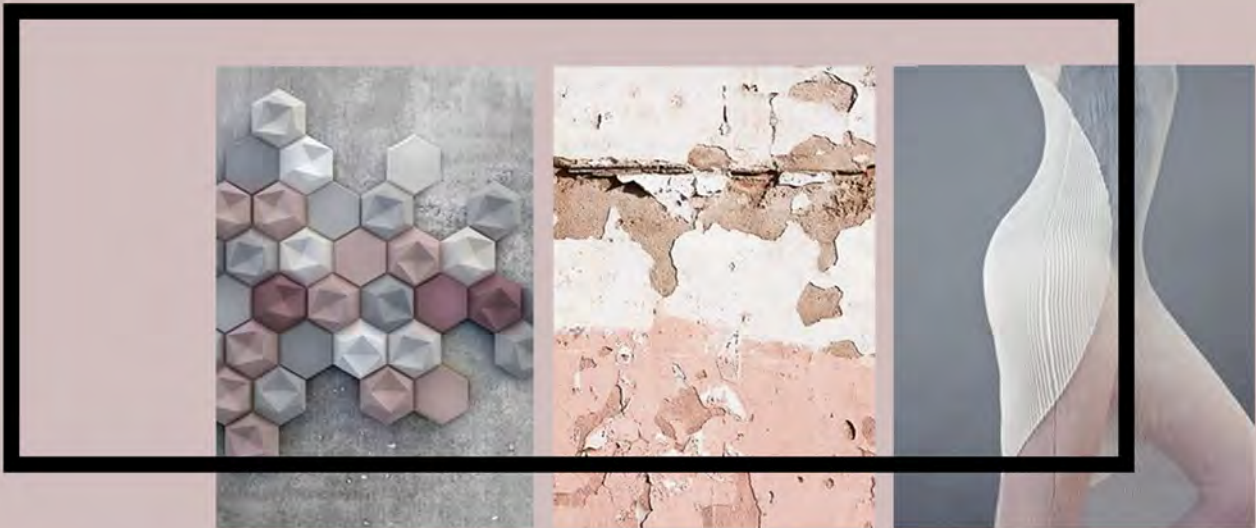


engineered pleat trousers
£139



fit: cropped wide-leg, a clean silhouette
fastening: elasticated waistband
details: heavily pleated
fabric: viscose mix - 69% Polyester, 29% Viscose, 2% Elastane.
colour: charchol black





For Pause SS17, the new era of technology and reconnection with time and wellbeing see a monochrome colour mood adopting earthy tones of nude and pink, with an accent of rose gold: an element of luxury, in SS17, it is the most desired colour for our iPhones and Apple technology.



name: cleo cox | age: 31 | occupation: founder and editor of new online coceptual magazine | house: studio appartment in East London | partner: boyfriend - Miles, urban photographer | shops at: cos, whistles, topshop, asos, monki, & other stories, vintage stores, office | beauty brands: nars, lush, coconut oil, bedhead | transport: Uber/tube | desired brands: vetements, comme des garcons, issey miyake, kenzo, marc by marc jacobs | weekends: shopping in carnaby street & shoreditch, galleries and exhibitions, eating out | restaurants: wagamamas, sushi and smoothie bars, independant coffee shops | social life: trendy cocktail bars and restaurants with girl firends | lifestyle: clean eating, yoga & pilates class | fashion and health concious | holidays: European city breaks - Prague, Stockholm, Paris | hobbies: travel, exploring london, photography | style: sports luxe fashion, trainers, simple with eye for detail





garment + design details investigation; ski suit/wetsuit/extreme weather garments



initial line up



high fashion sport influence
luxury activewear

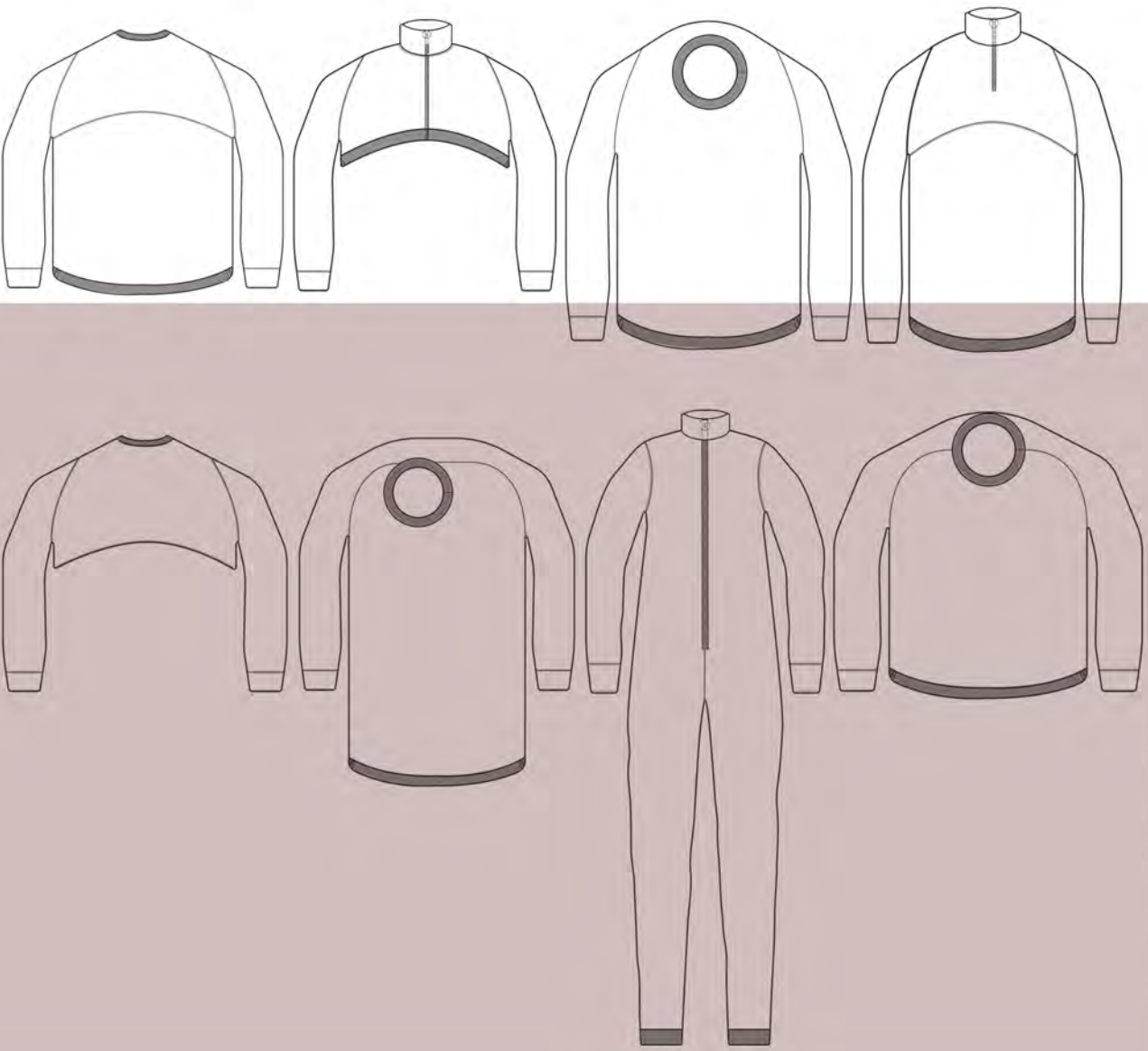


Autograph

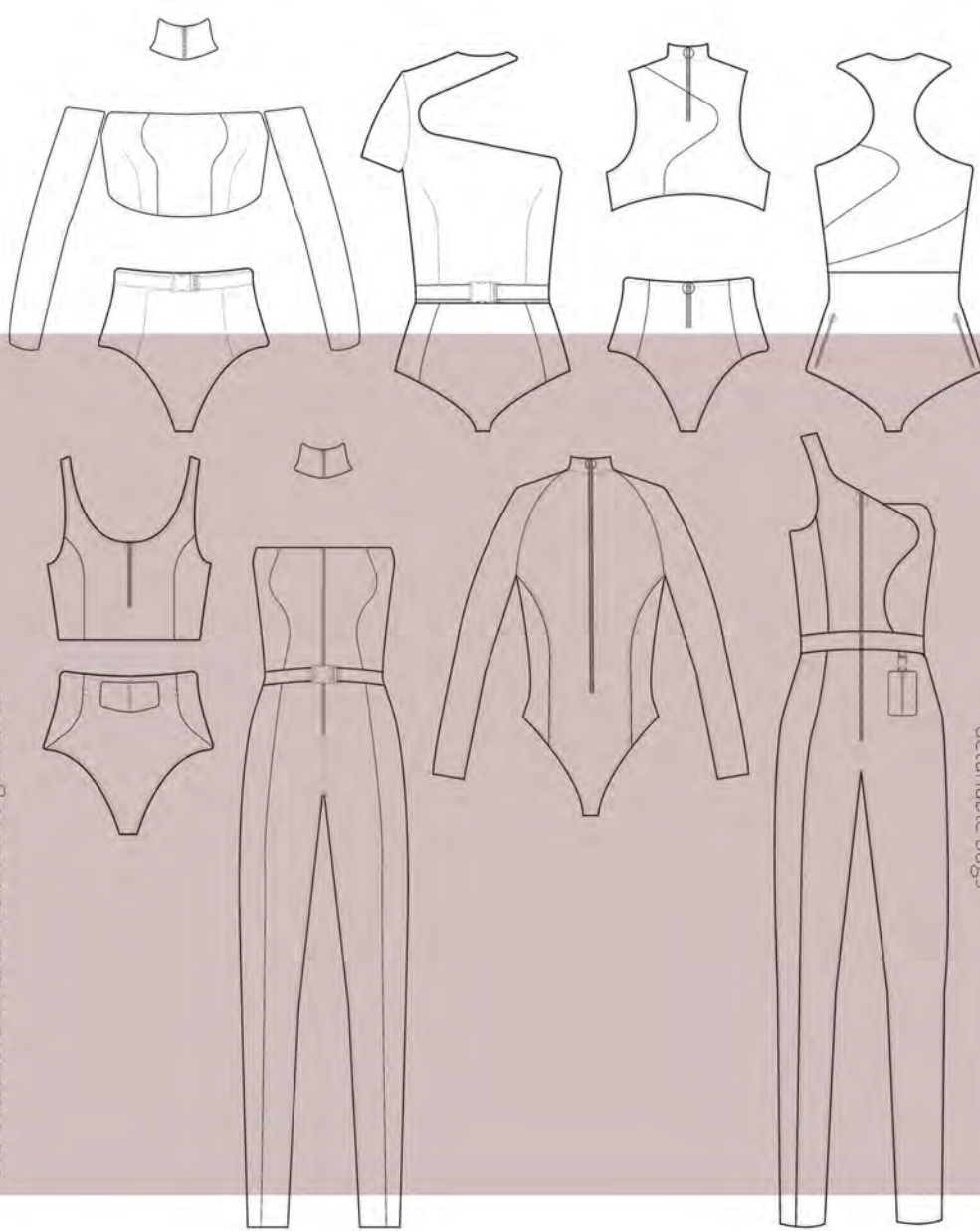
M&S

FABRICS

metallic foiled lycra
airtex
airtex mesh
spacer airtex mesh
bonded jersey
woolen bonded jersey
double sided jersey with terry cloth
neoprene



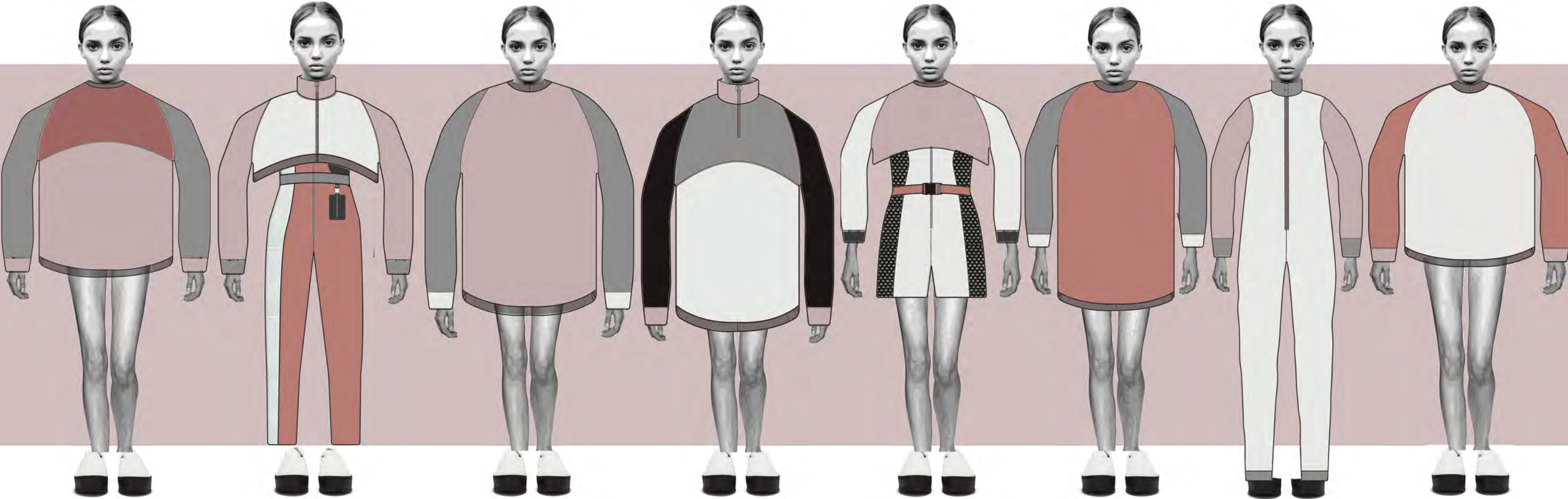
over sized luxe sweatshirts and overgarments



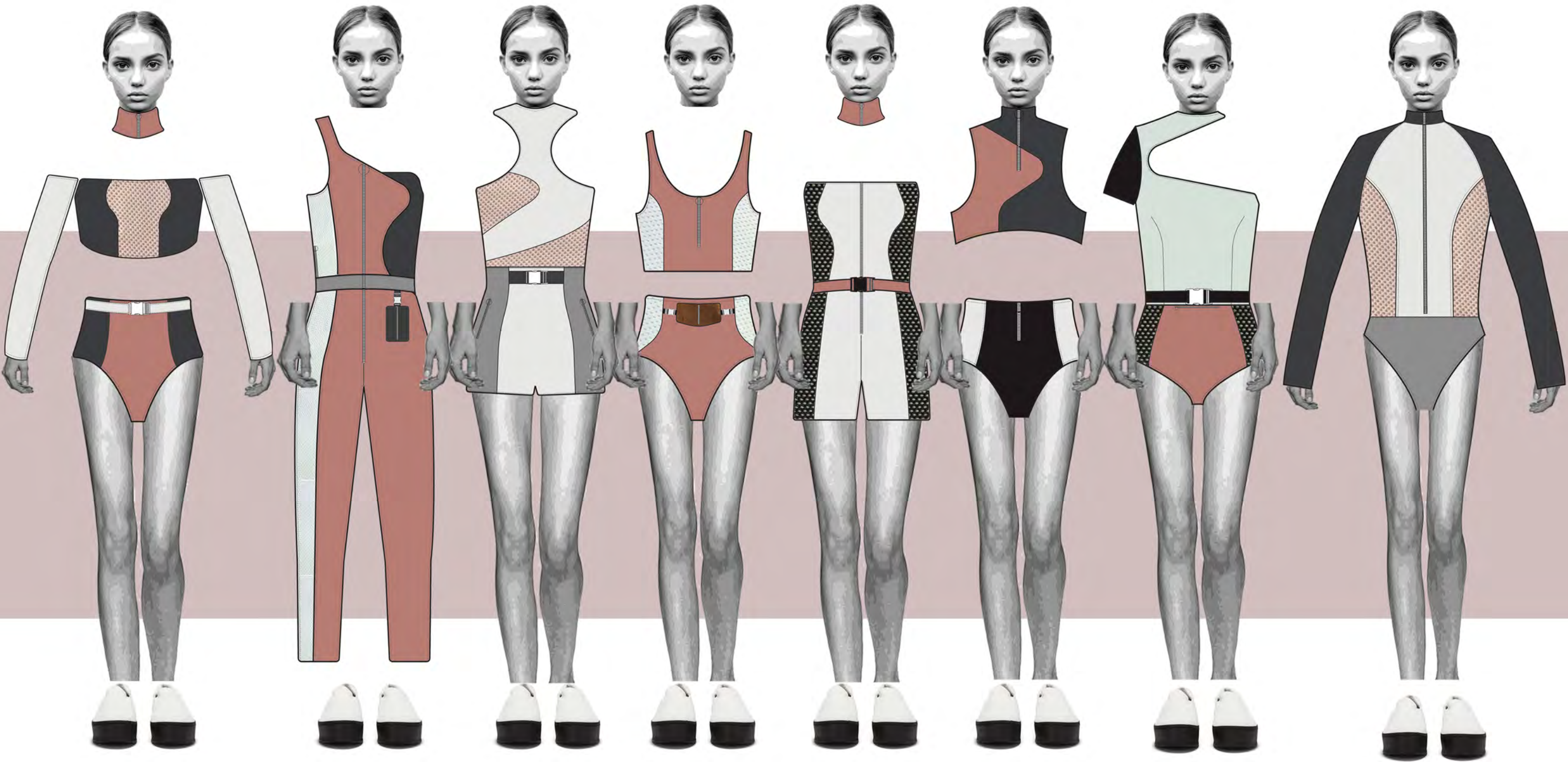
activewear: swim, sport, leisure, wellbeing
detachable bags



colour palette



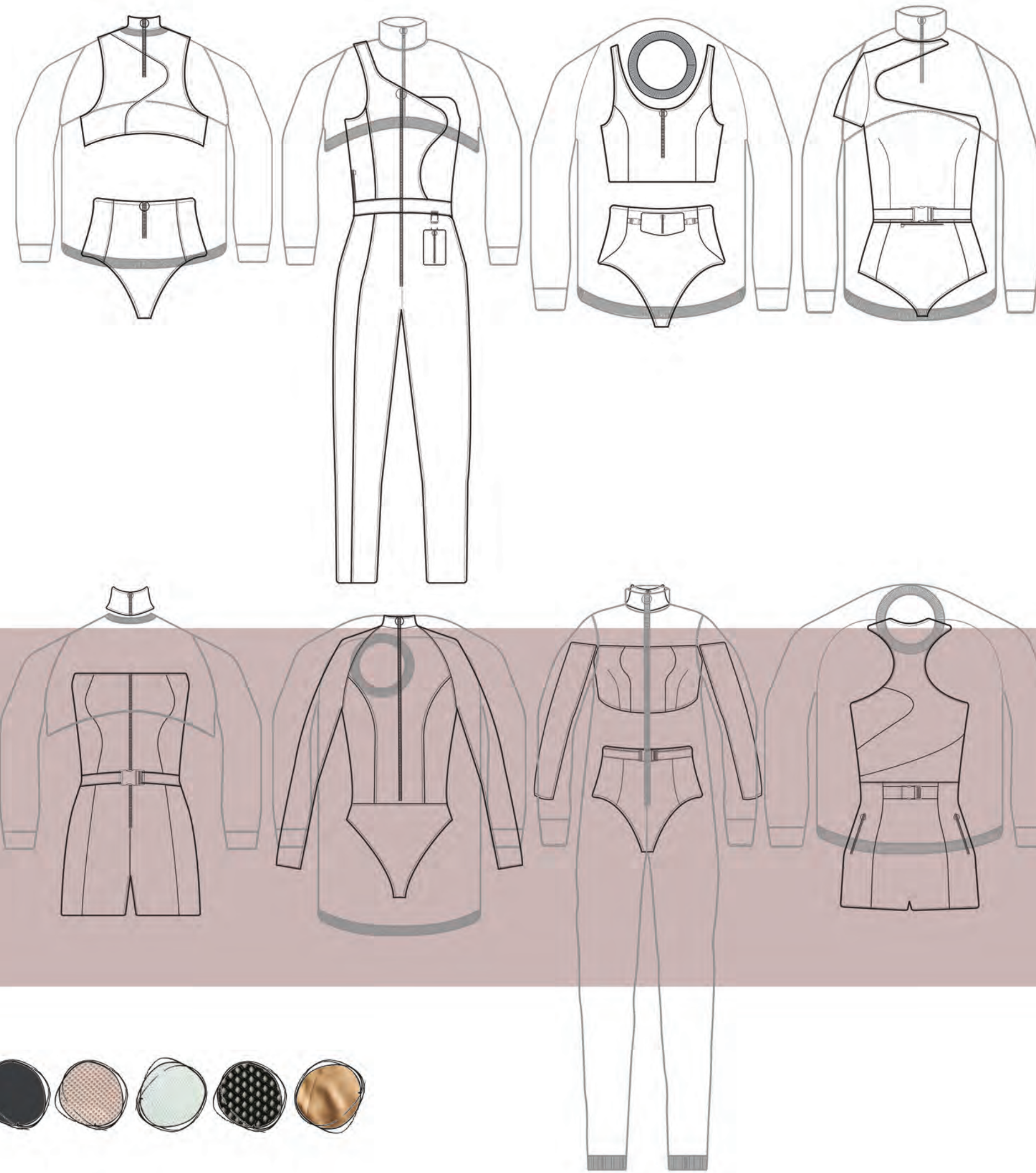
ATHELEISURE SS17



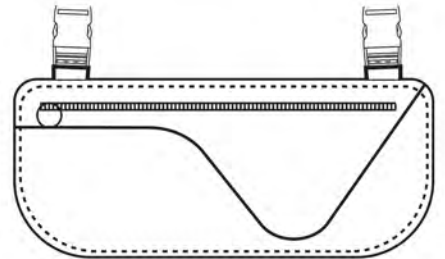
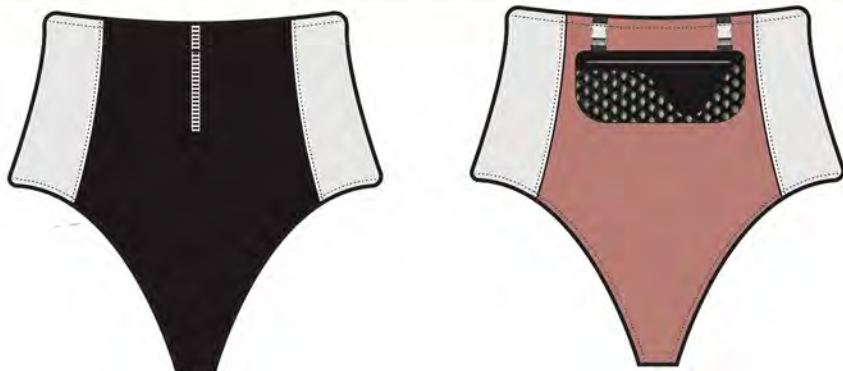
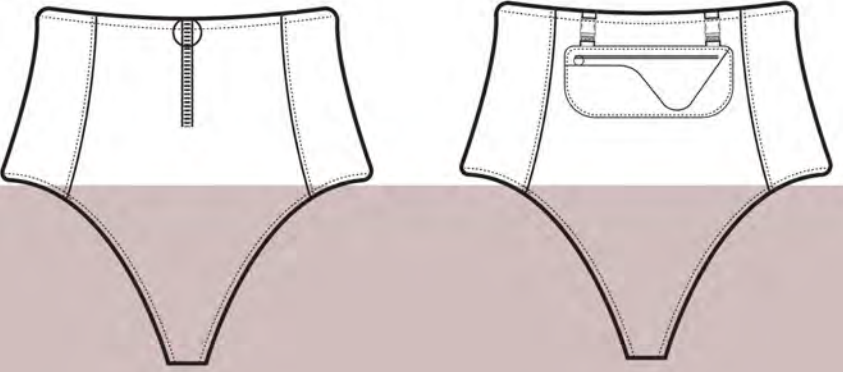
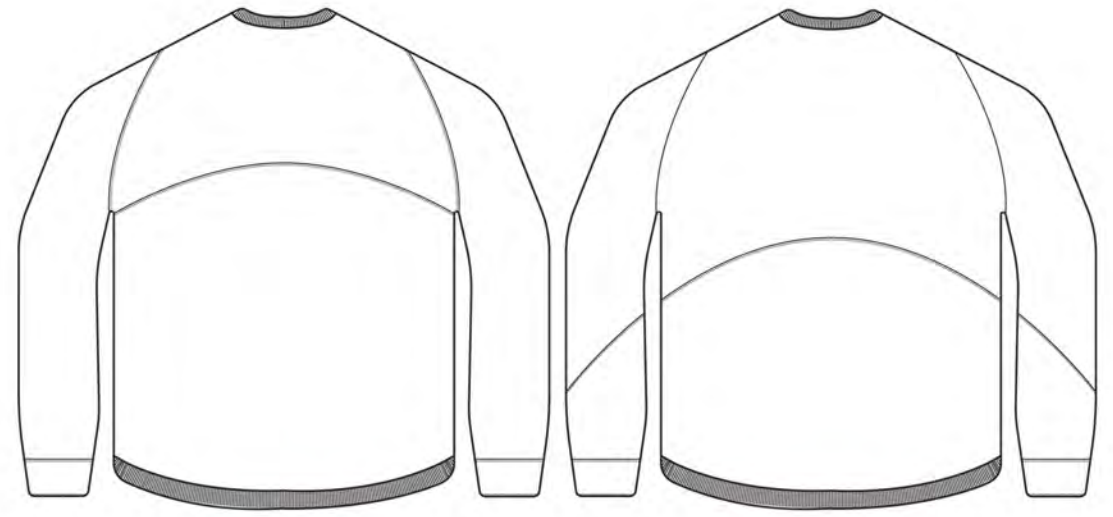
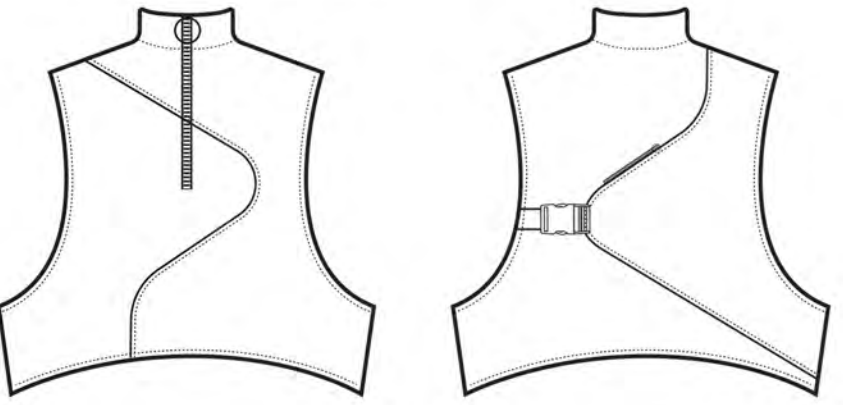
ATHELEISURE SS17

Autograph

M&S







two piece undergarment

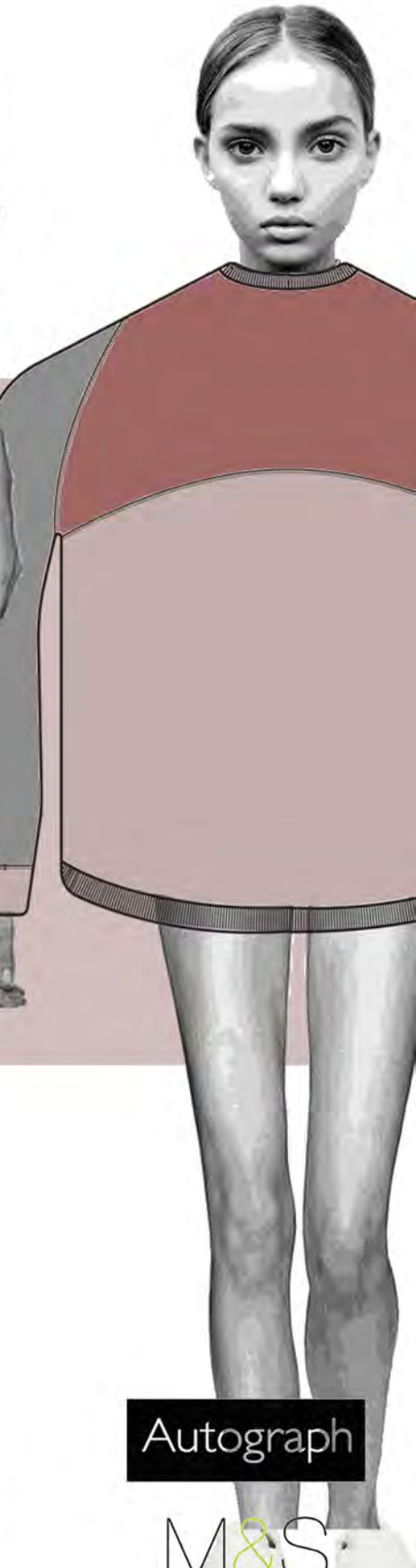
top: fitted as a 'second skin' the crop top features a short stand collar and ring pull detail zip at centre front which passes through collar. There is a curved hem and asymmetric panel with bonded seam on top front. Back of top has an overlapping asymmetric panel with fastens with strap in armhole seam and white plastic clip buckle. There is a concealed pocket placed on seam. Armholes curve into towards centre front/back.

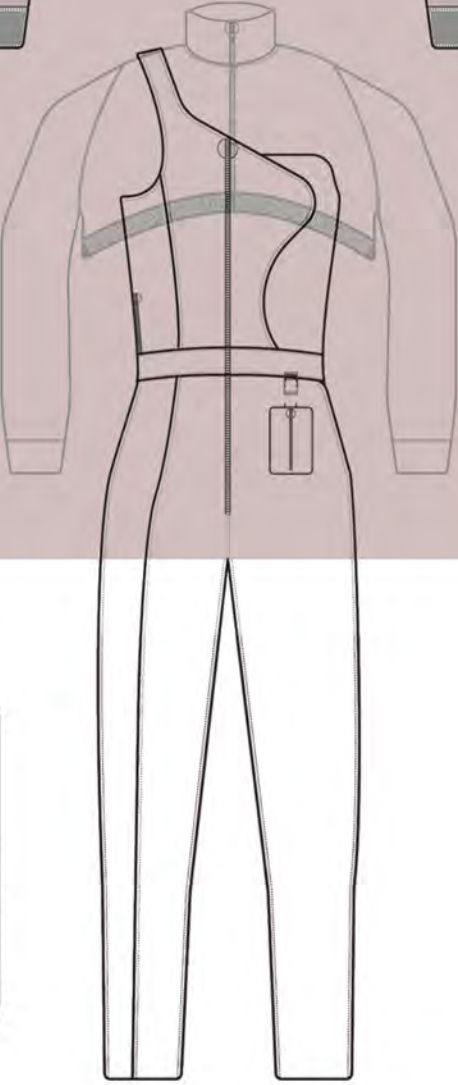
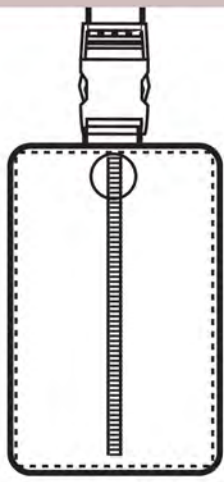
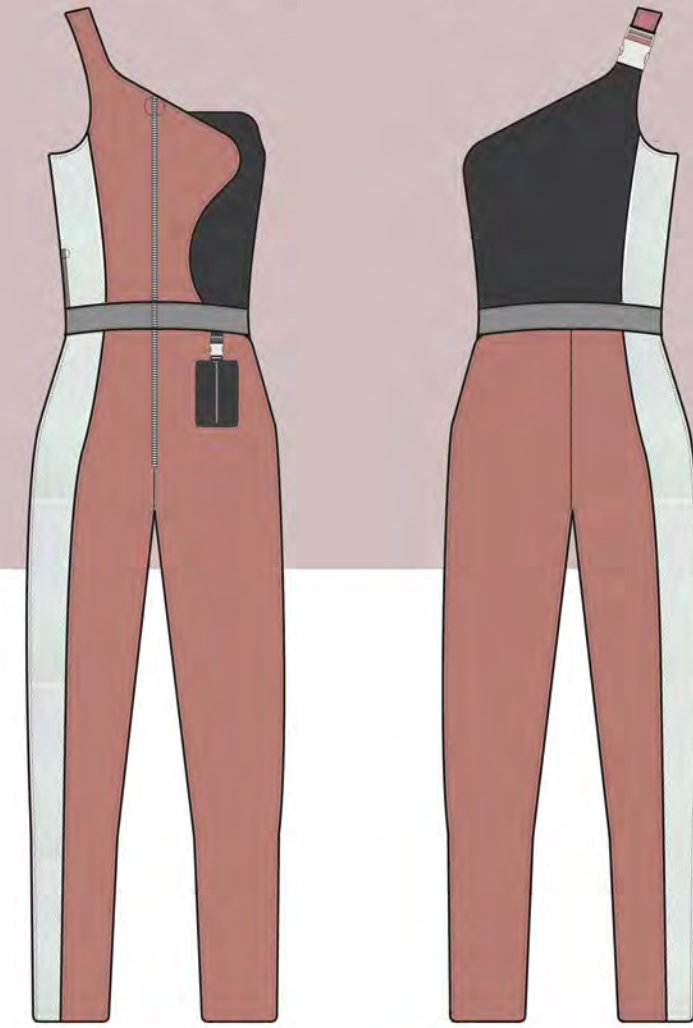
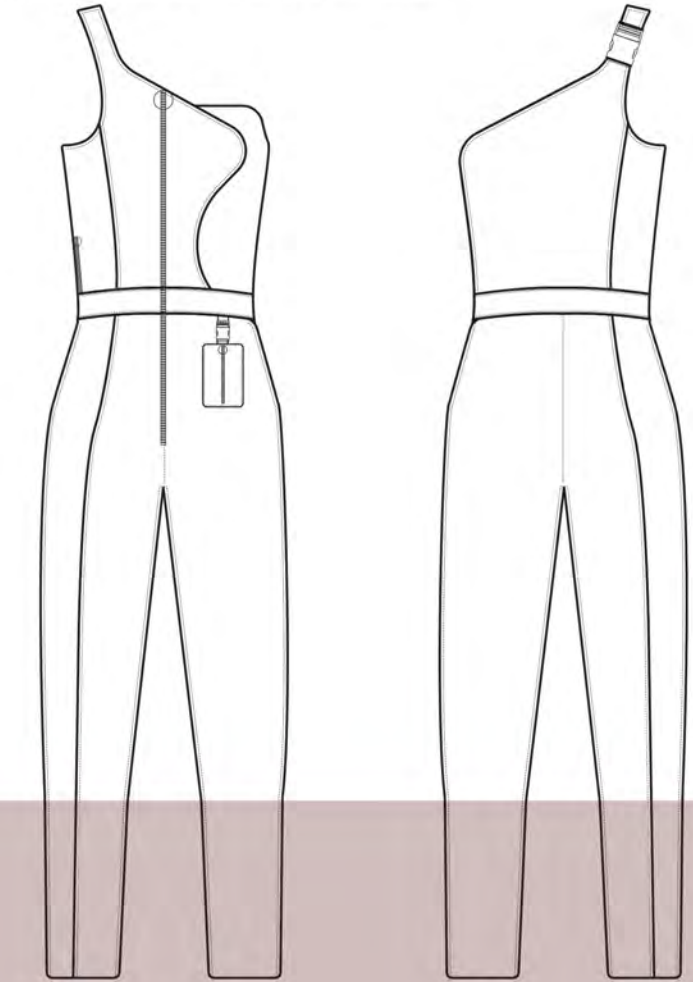
bottoms: high waisted and high cut fit.Two panels run down side seam creating a bonded seam with front and back panels. Fastened with ring pull detail zip at CF.

detachable bag: asymmetric panelling mirrors garment detail. Horizontal ring pull zip fastening and two buckle clips create detachable function with straps attached to waistband back.

luxie sweatshirt

extreme exaggerated oversized fit. Curved yoke on front and back, elasticated cuffs and sweatshirt hem and collar ribbing. Sleeve back features curved panelling in line with curved yoke.



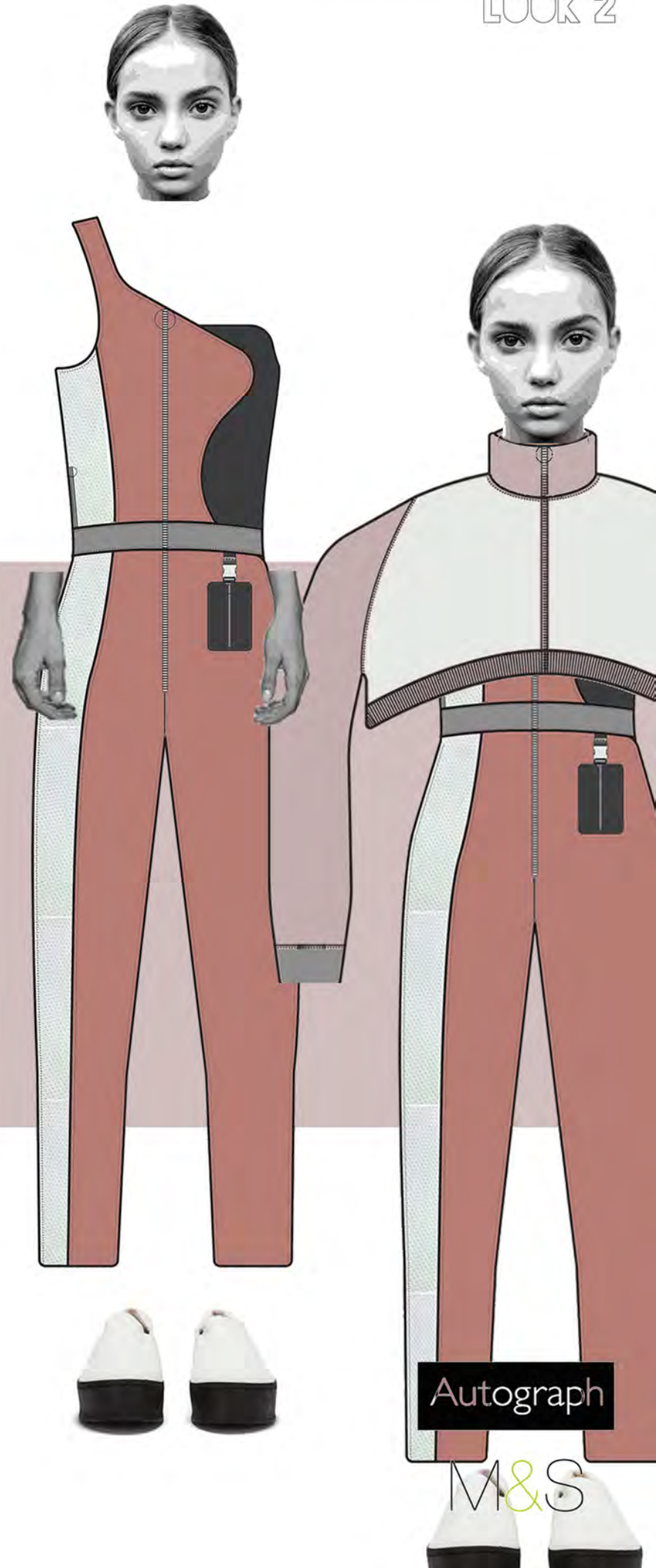


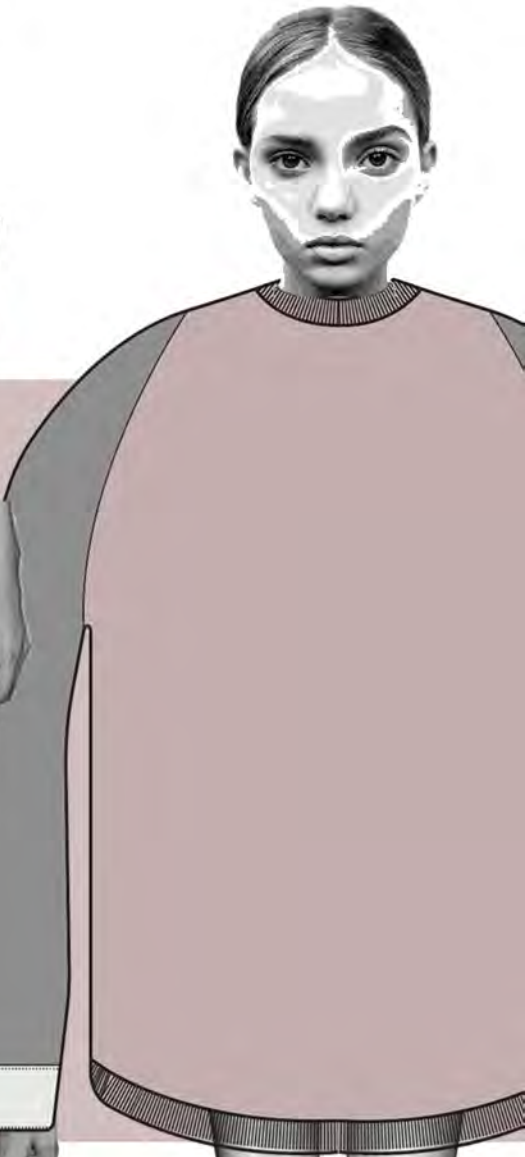
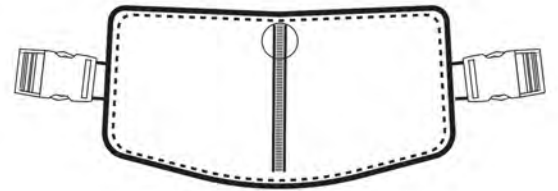
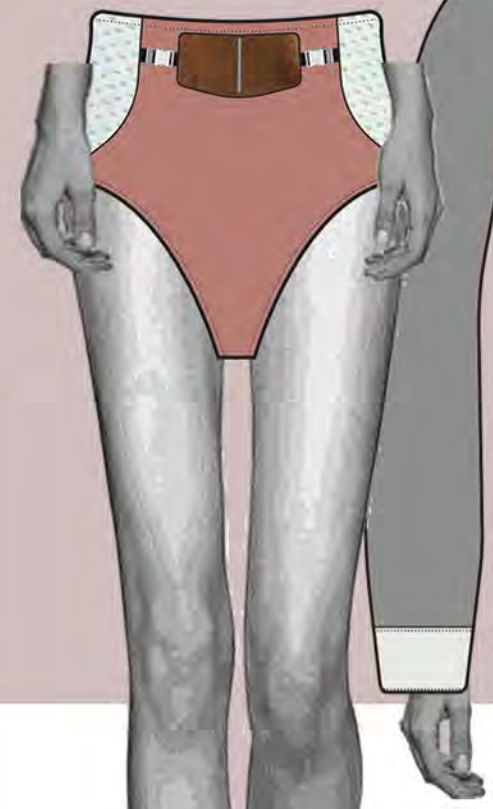
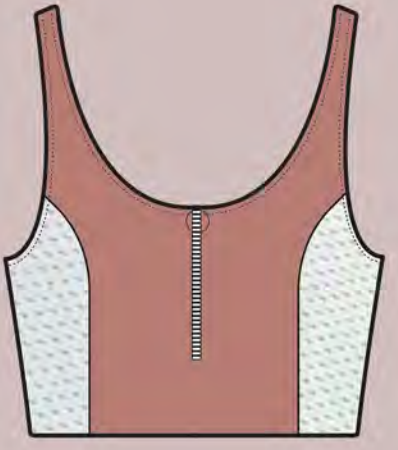
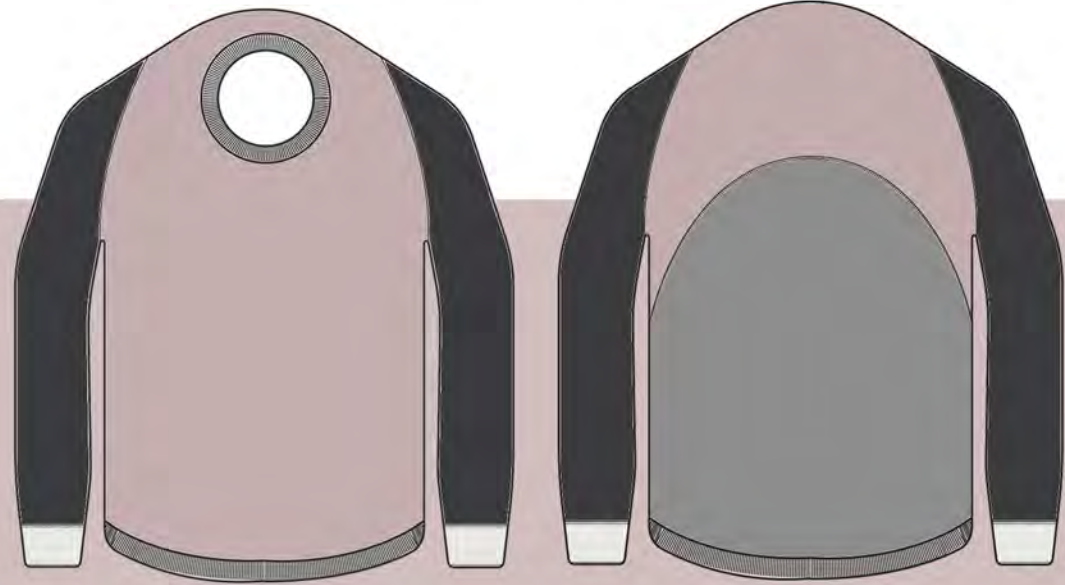
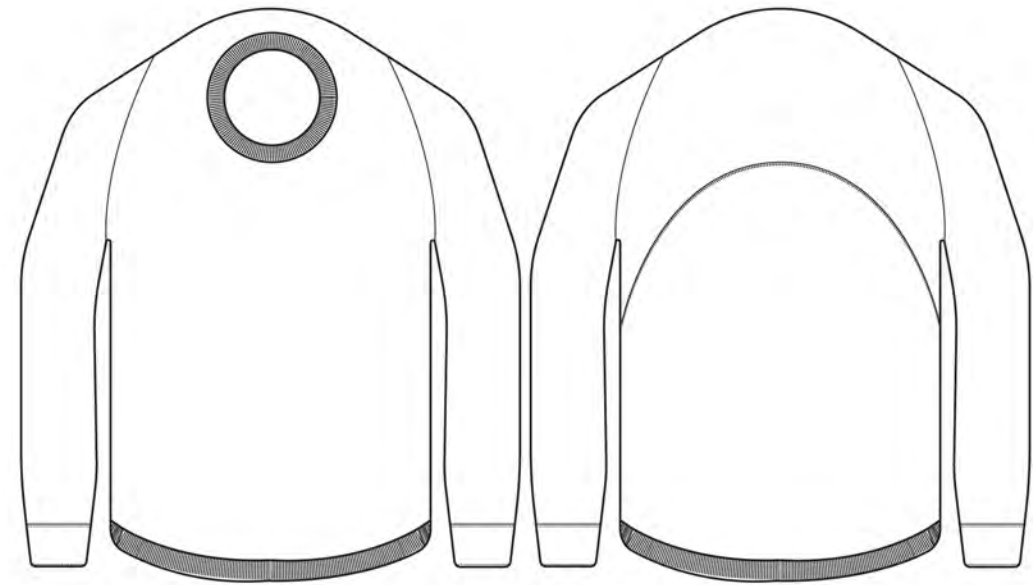
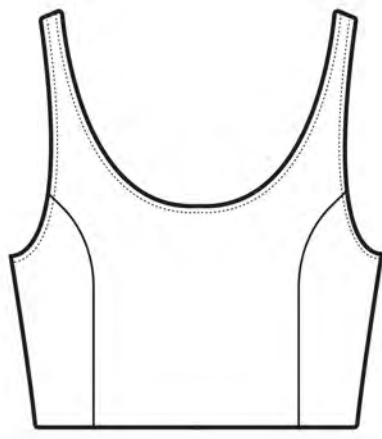
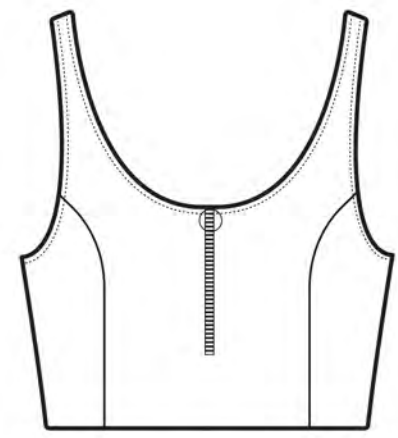
jumpsuit undergarment
fitted as 'second skin' the jumpsuit features an asymmetric sleeve and curved bonded seam. A zip pocket is concealed in side seam and jumpsuit is fastened with ring pull detail zip at CF. which passes through waistband. Bonded seam runs down right side of garment. on both front and back panels. Jumpsuit back features contrast panelling and strap fastening with buckle clip.

detachable bag
attached to waistband, sized to fit mobile phone and essentials - detaches from waistband with clip buckled fastening and opens with vertical ring pull detail zip.

cropped bomber
exaggerated oversized fit and extreme curved cropped hem. Tall, over sized stand collar, cuff and ribbed hem, details. ring pull zip passes down CF. contrast sleeve and bodice panelling on front and back. lined in rose gold metallic foiled lycra.

TECHNICAL DESCRIPTION





undergarment top
fitted 'second skin' crop top with shoulder straps and ring pull detail zip at centre front. wing panelling passes through side to form bonded seam panels.

undergarment bottoms
fitted high waisted and high cut with contrast panelling removing side seam to form bonded panel.

detachable bag
fastening on front in bum bag style removes with clip buckles attached to straps joined in side panelling. bag detaches and opens with ring pull zip at centre

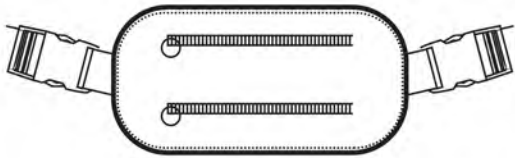
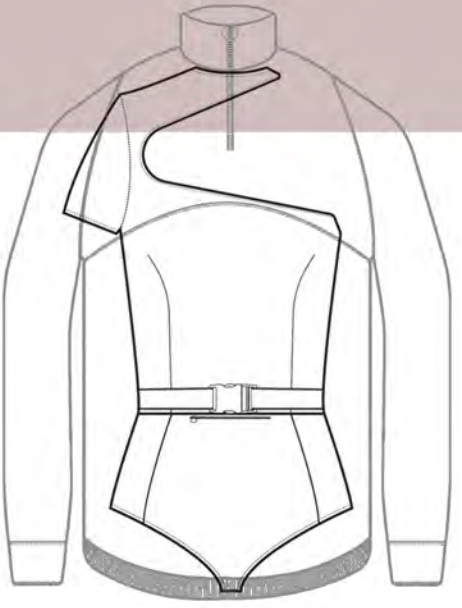
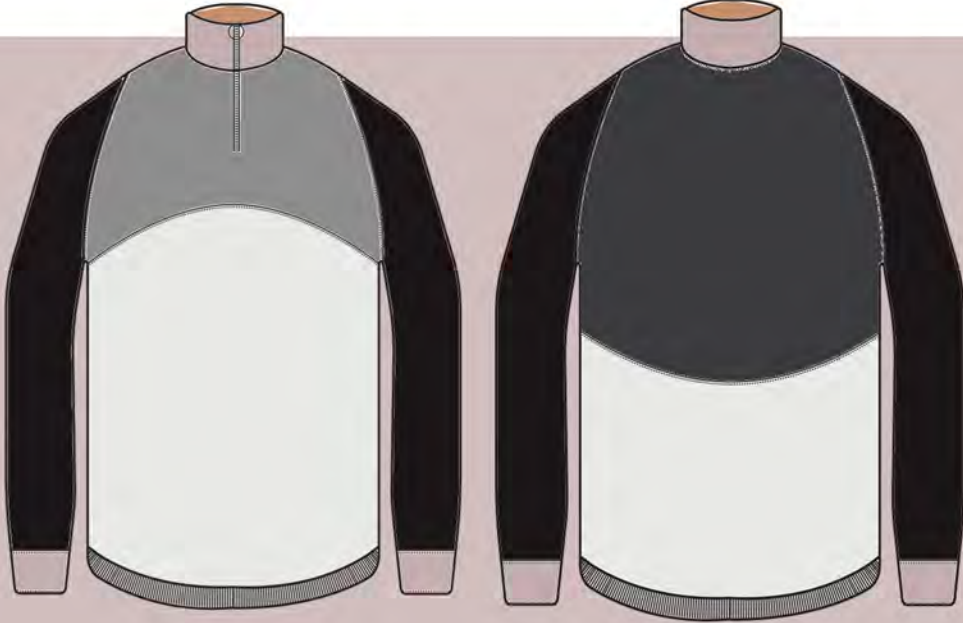
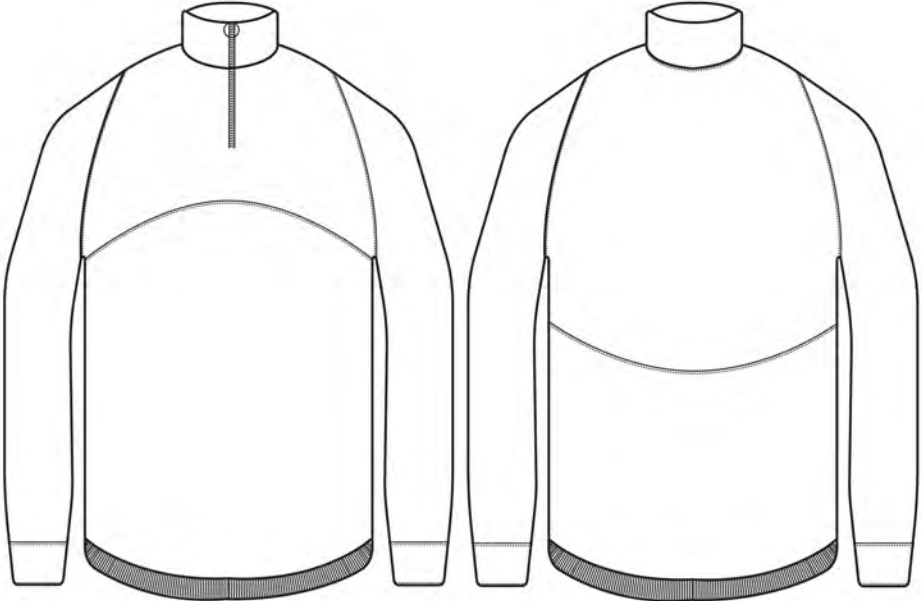
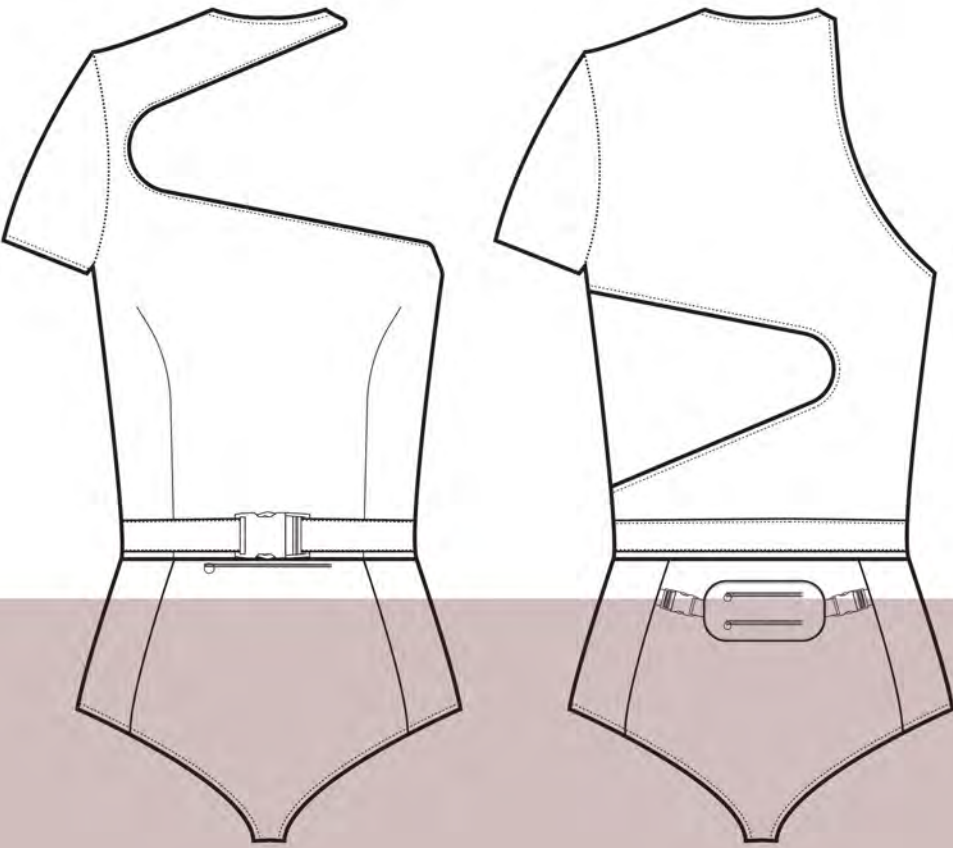
luxe sweater
extreme oversized fit with exaggerated length sleeves. neck hole is placed forward to create asymmetric drape when worn - shorter at front. extreme curved yoke at back, cuff and sweater ribbing detail at neck and hem.

TECHNICAL DESCRIPTION



Autograph

M&S

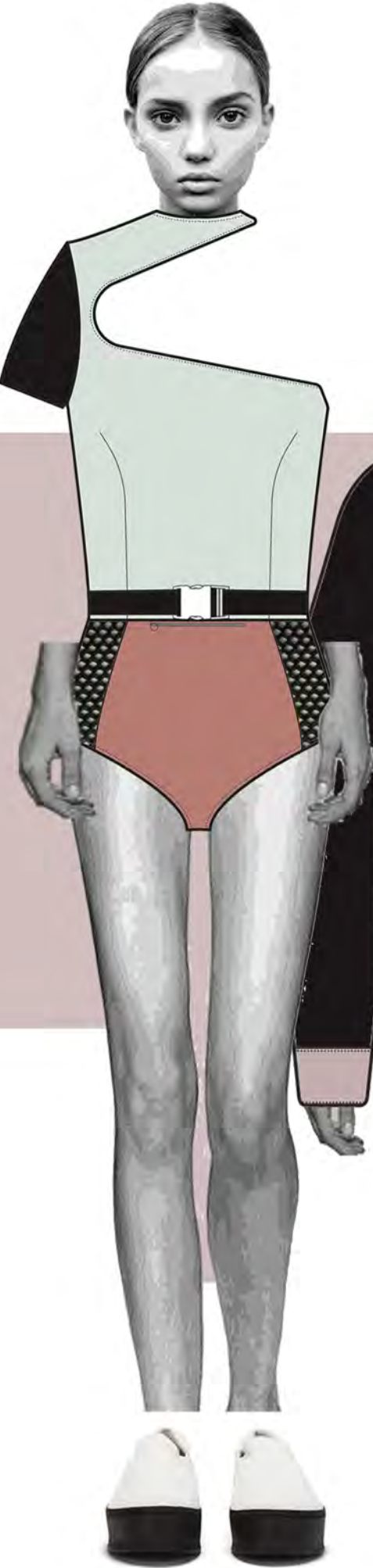


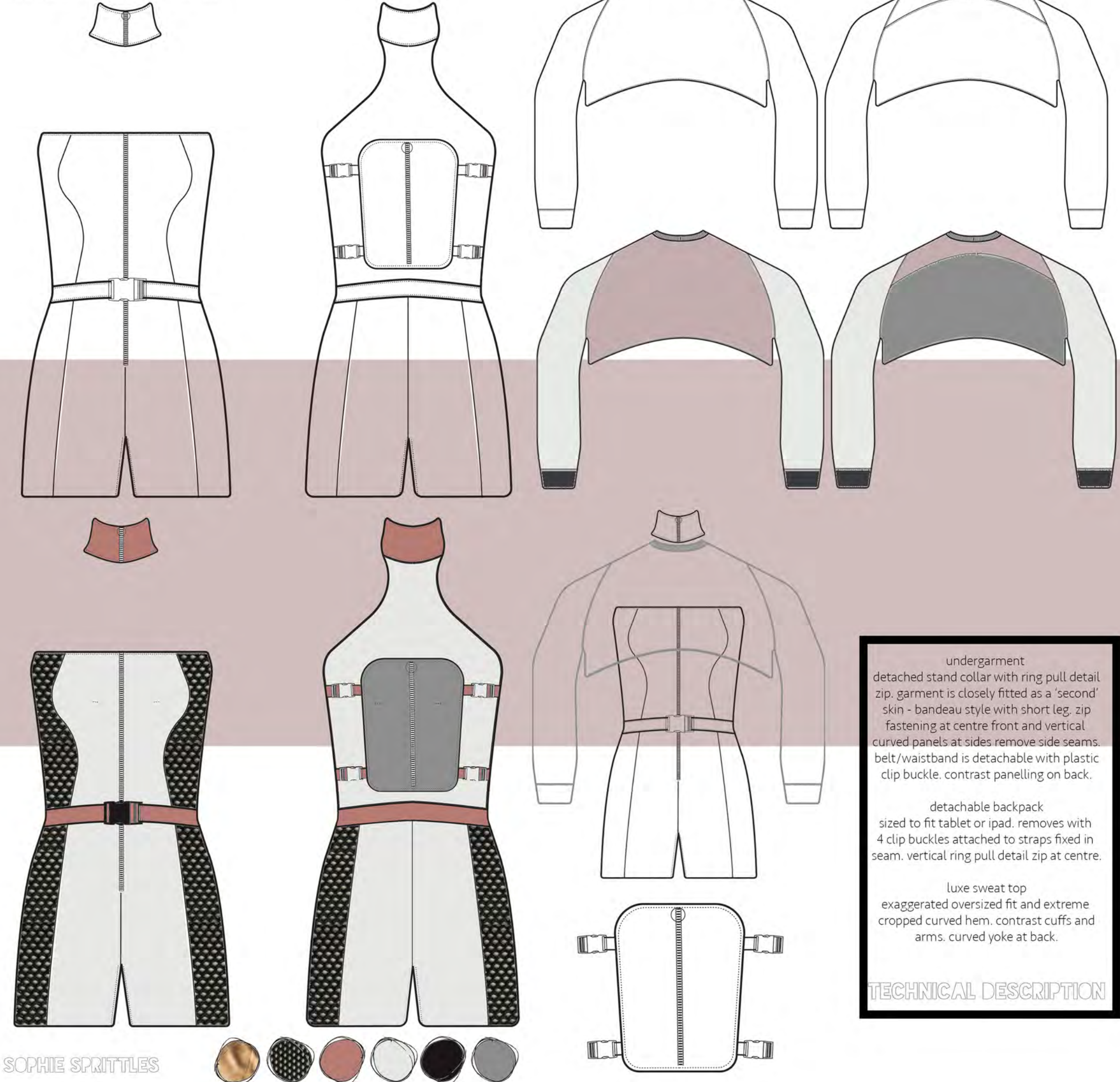
undergarment
fitted as 'second skin' asymmetric
sleeve and cut out neckline. darts
passing through waist to bust for
enhanced fit; detachable waistband/
belt fastens with large clip buckle.
contrasting bonded panel passing
through lower side seams. hidden
zip pocket in waist seam.

detachable bag
removes with buckle clips - straps in
panelling. attach bum bag to garment.
two ring pull detail zip pockets on bag.

over garment
extreme oversized fit with exaggerated
size stand collar. with ring pull detail
zip passing through collar. cuffs and
sweater ribbed hem. curved yoke on
front and back.

TECHNICAL DESCRIPTION



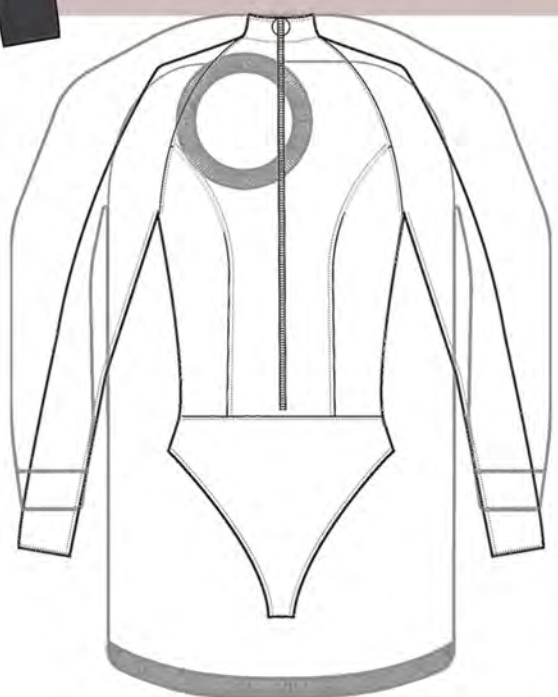
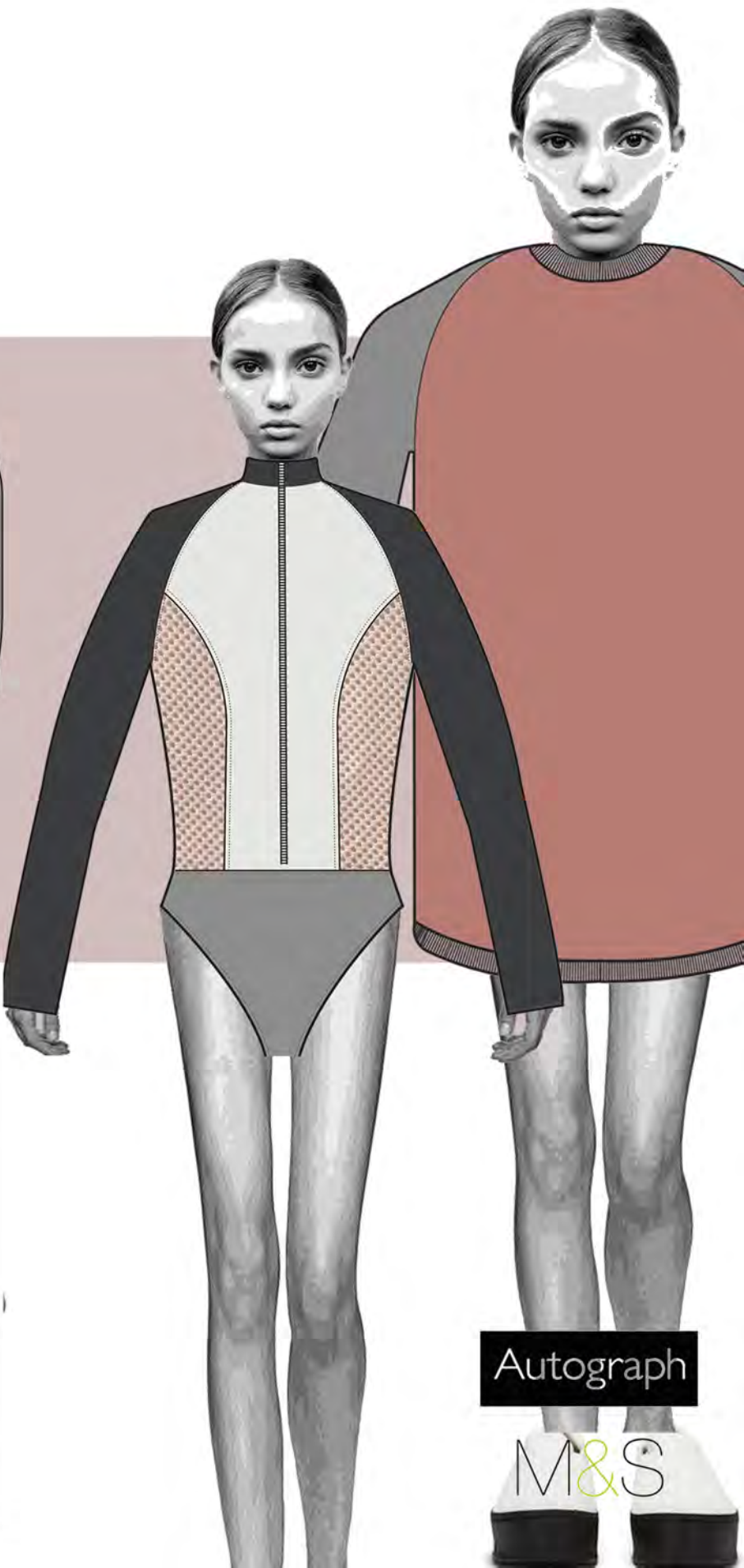
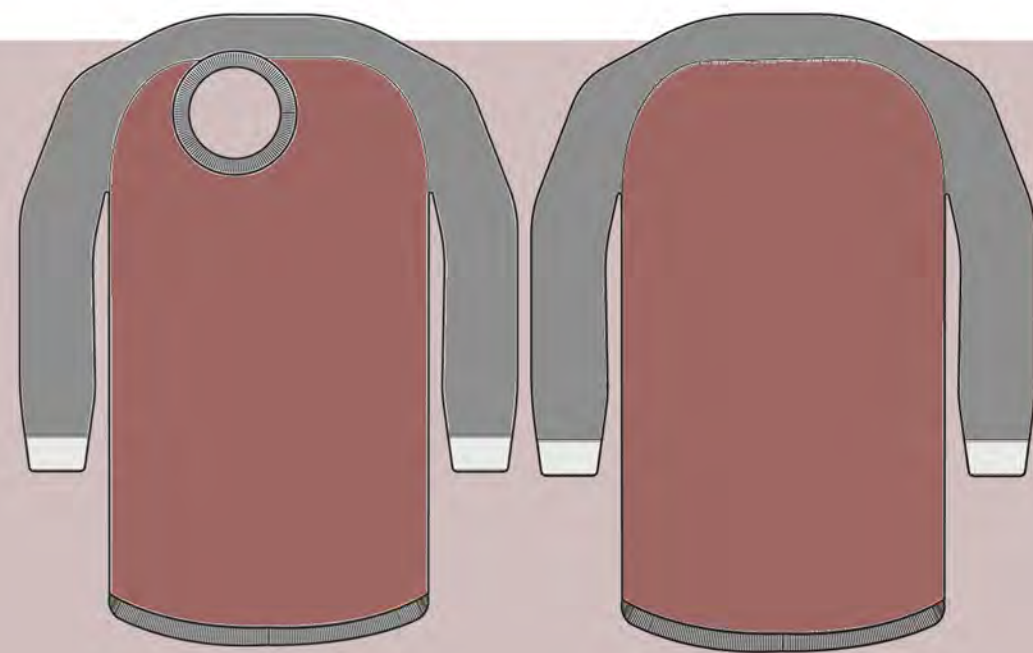
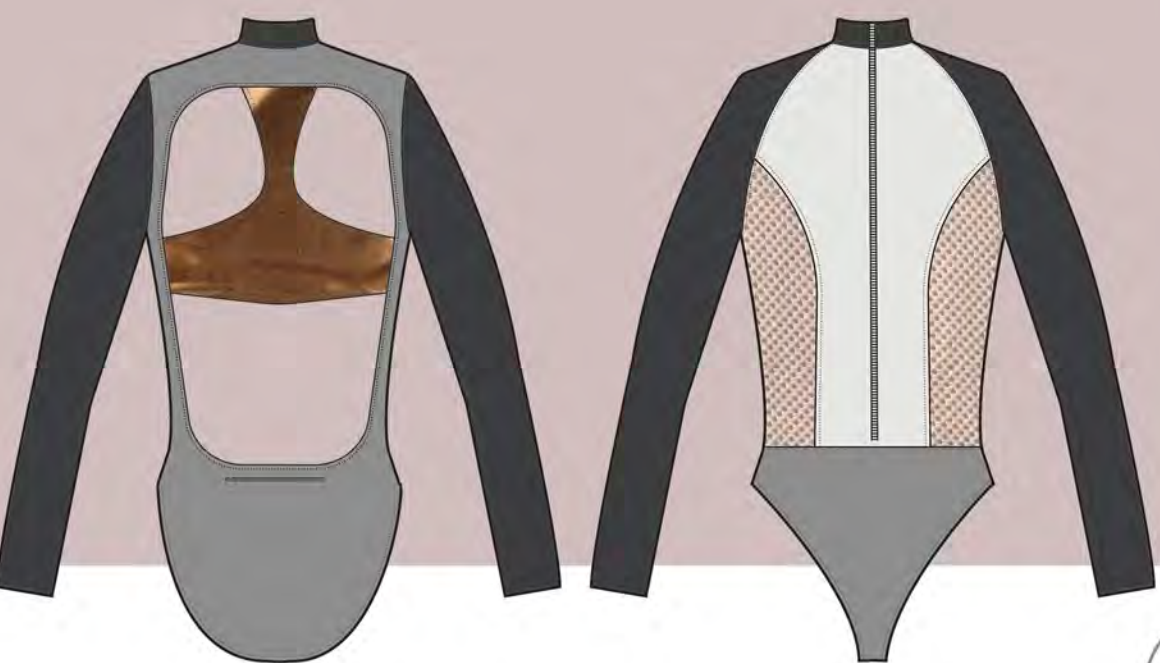
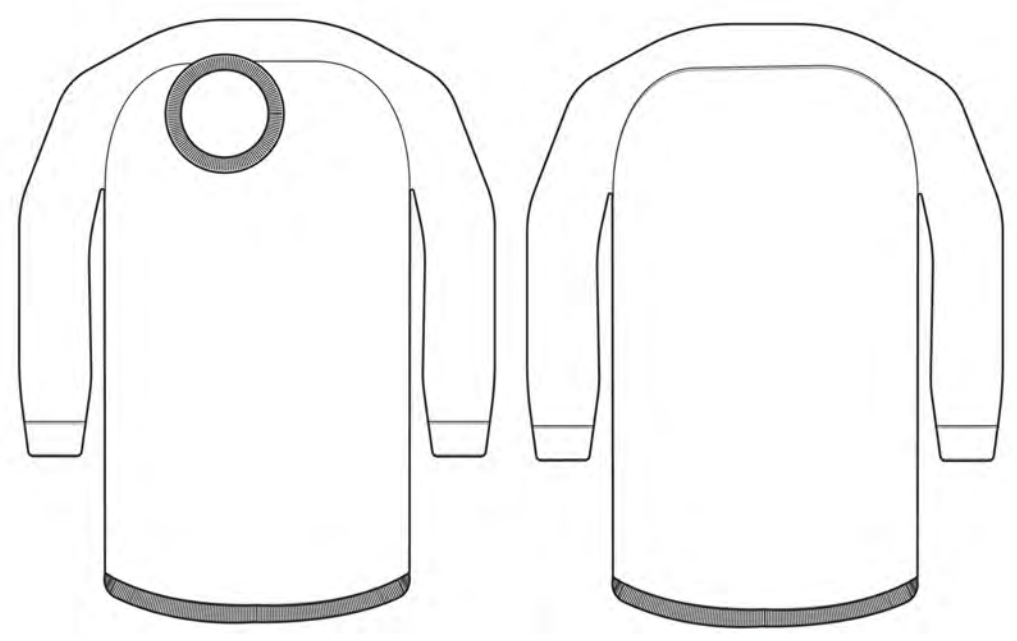
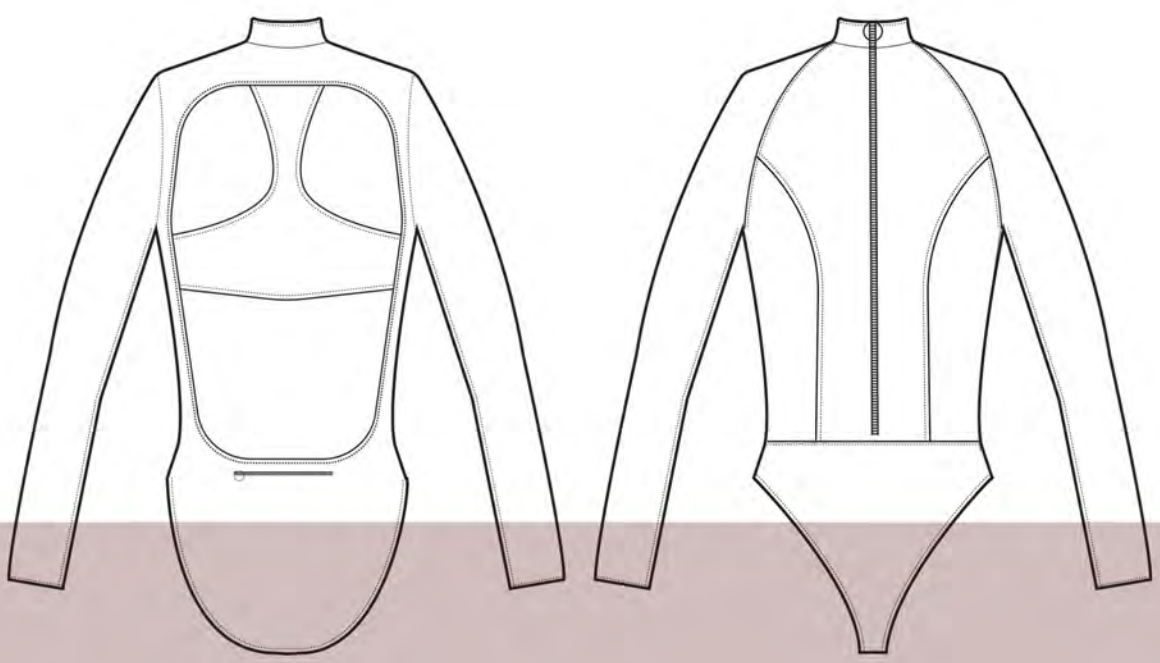


undergarment
detached stand collar with ring pull detail
zip. garment is closely fitted as a 'second'
skin - bandeau style with short leg. zip
fastening at centre front and vertical
curved panels at sides remove side seams.
belt/waistband is detachable with plastic
clip buckle. contrast panelling on back.

detachable backpack
sized to fit tablet or ipad. removes with
4 clip buckles attached to straps fixed in
seam. vertical ring pull detail zip at centre.

luxé sweat top
exaggerated oversized fit and extreme
cropped curved hem. contrast cuffs and
arms. curved yoke at back.

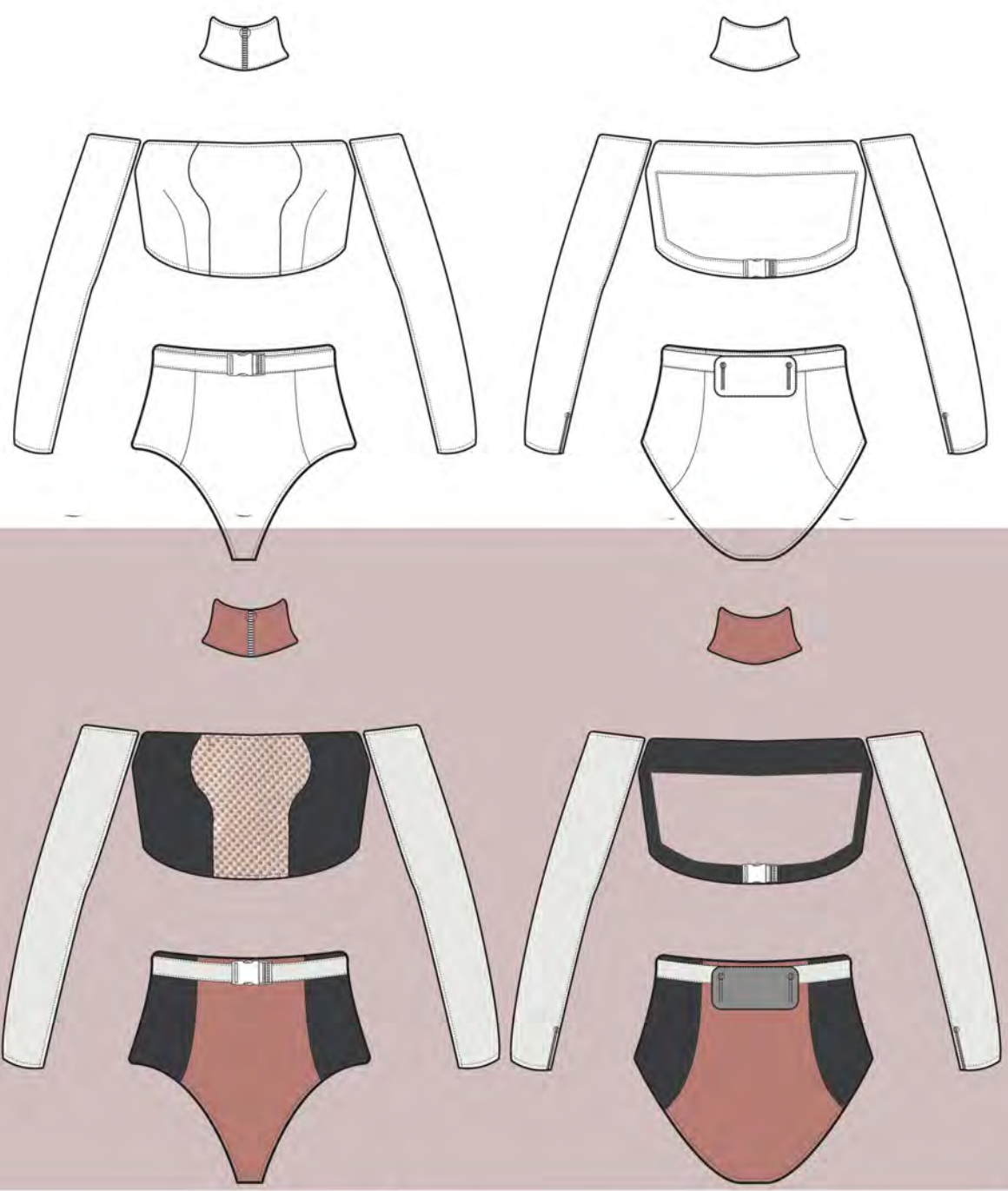
TECHNICAL DESCRIPTION



undergarment body
fitted as second skin - fitted long sleeves with
contrast wing panelling with bonded seams.
short stand collar with ring pull detail zip
passing through centre front. contrast waist
seam and high cut leg. extreme cut out back
with racer back style insert. concealed zip
pocket at lower back.

luxé sweatshirt
extreme oversized sweatshirt dress with
exaggerated sleeves. raglan style yoke with off
centre neck to allow asymmetric drape of
sweater when worn. contrast cuffs and
sports style ribbed hem.

TECHNICAL DESCRIPTION



undergarment
fitted as 'second skin'. featuring separate exaggerated chocker style collar with ring pull detail zip at CF. fitted sleeves are detached from top with hidden zip pockets on cuffs. bandeau crop top has curved vertical panelling at front and cut out back with buckle clip fastening.

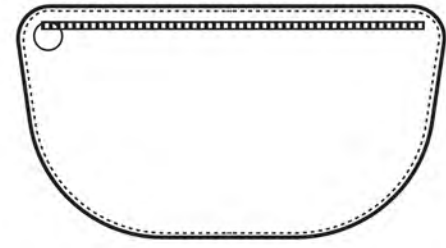
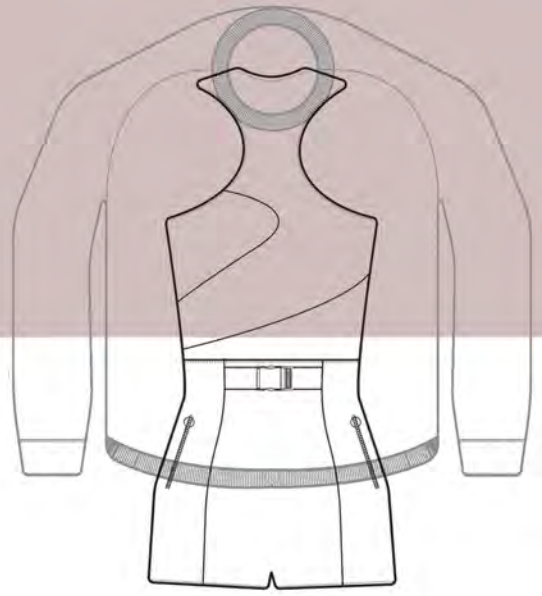
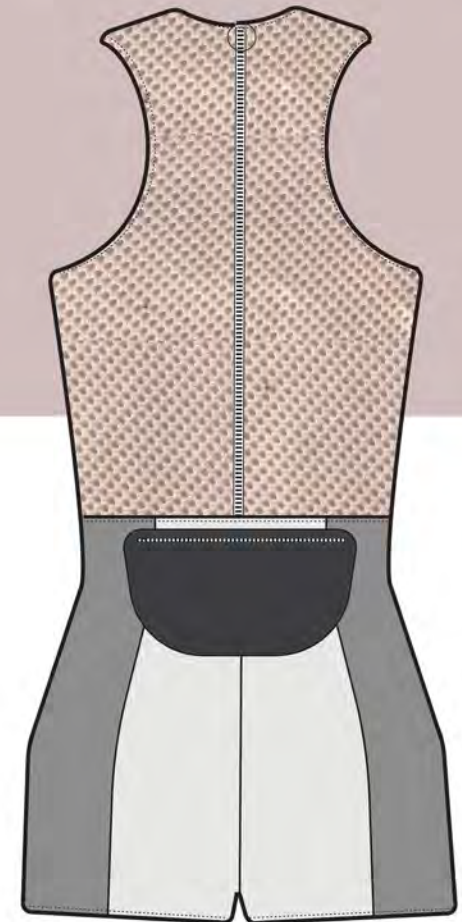
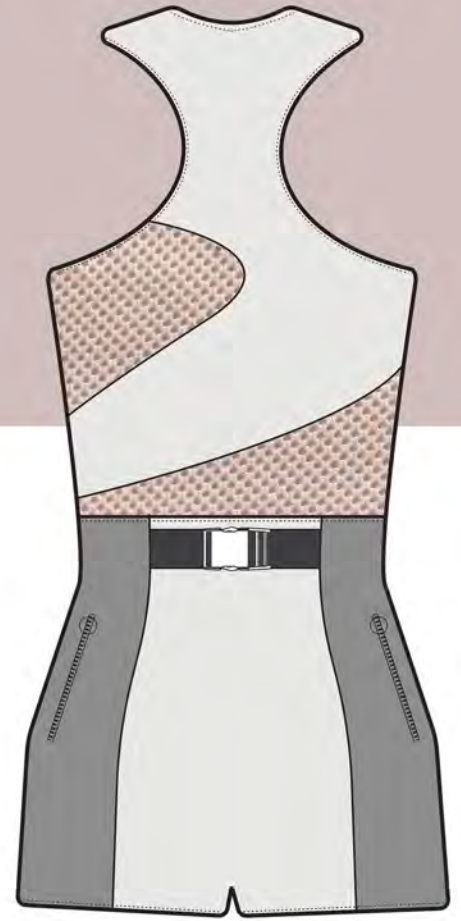
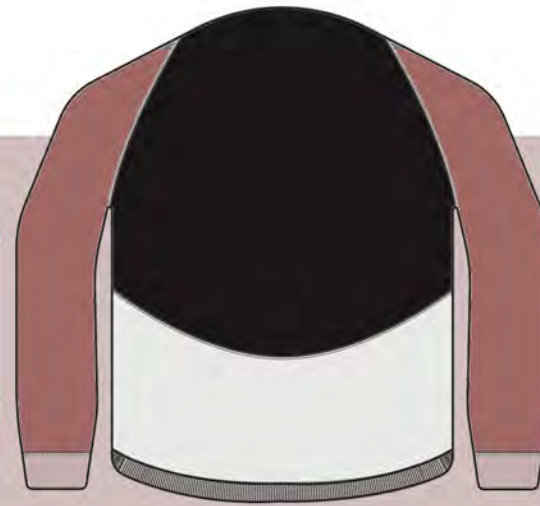
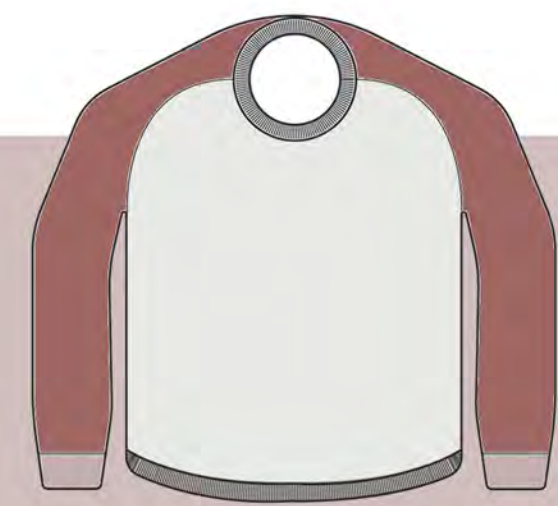
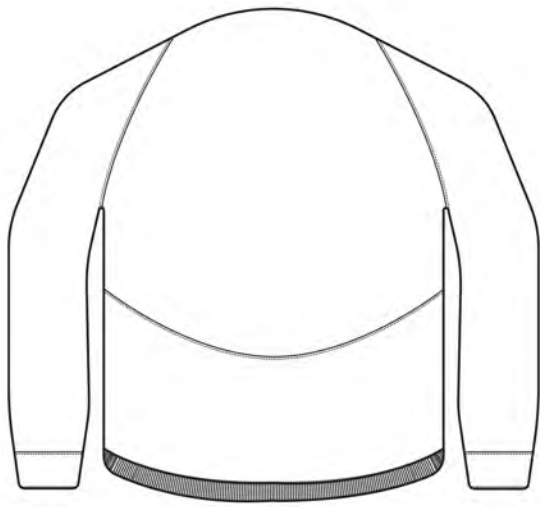
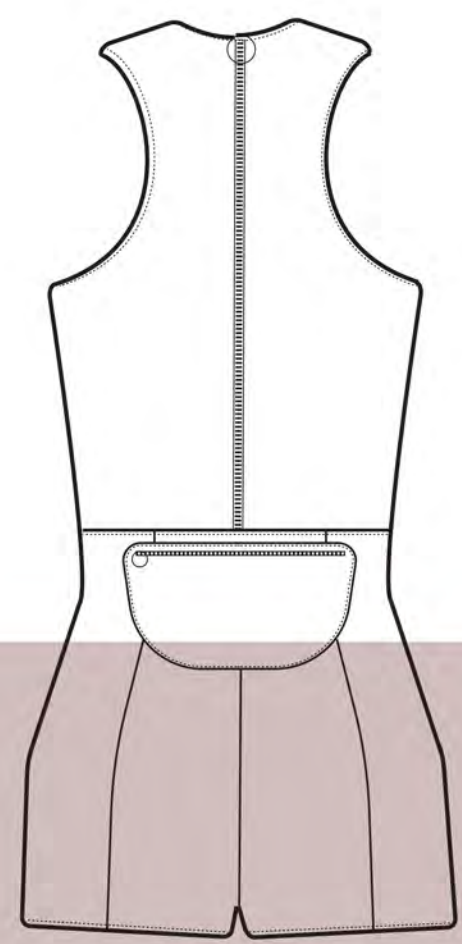
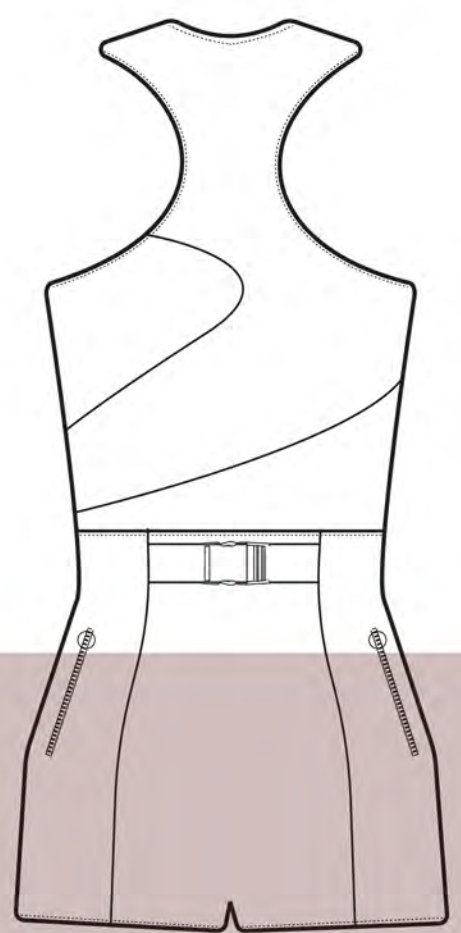
bottoms are high waisted fit with high cut leg. bonded contrast panelling removes side seams and panels pass across sides. waistband/belt is detachable with buckle clip.

detachable bag
attached to waistband with poppers for easy attachment and removal. two vertical ring detail zip openings.

jumpsuit
slightly oversized fit with stand collar and ring pull detail zip at CF. curved yoke at back and contrast sleeve panelling. sports style cuffs and ribbed trouser hem.

TECHNICAL DESCRIPTION



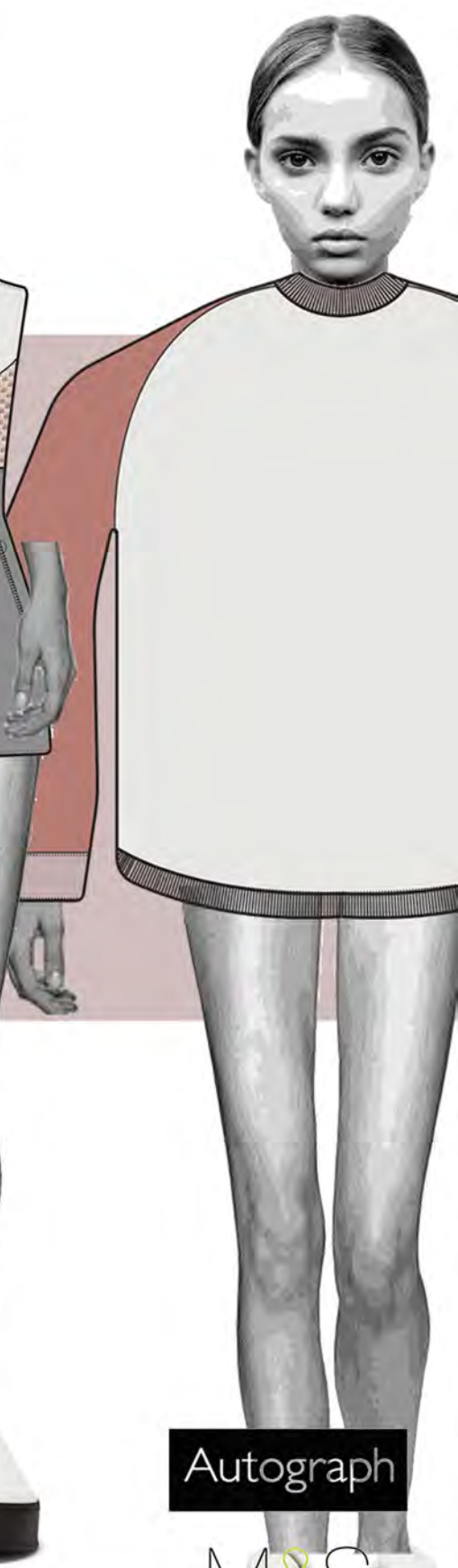
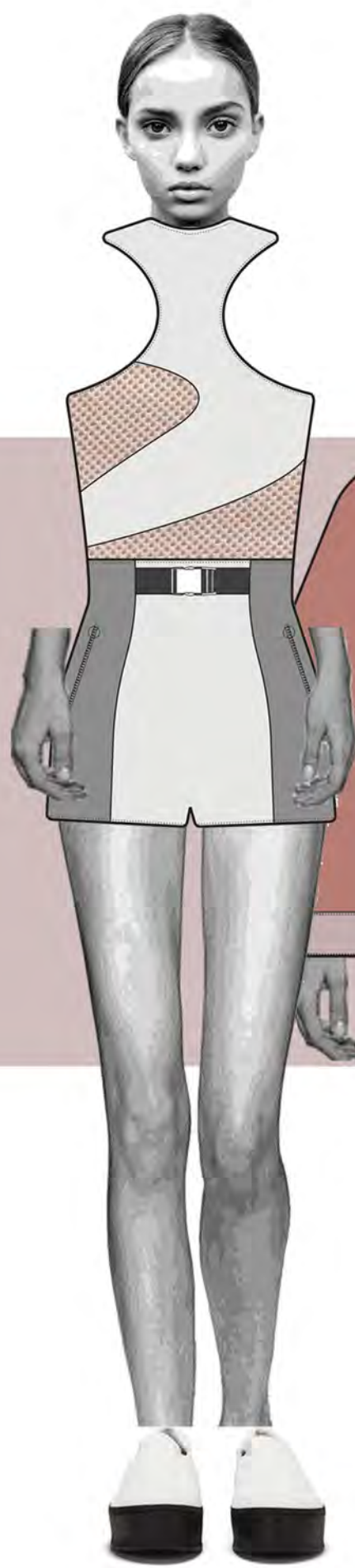


undergarment
fitted 'second skin' with asymmetric curved panel design. vertical panelling removes side seams on shorts. two symmetric zip pockets with ring pull in side panels. buckle clip belt design detail. fastening at CB - with ring pull detail zip allows garment to be functional.

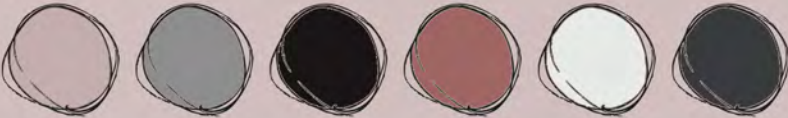
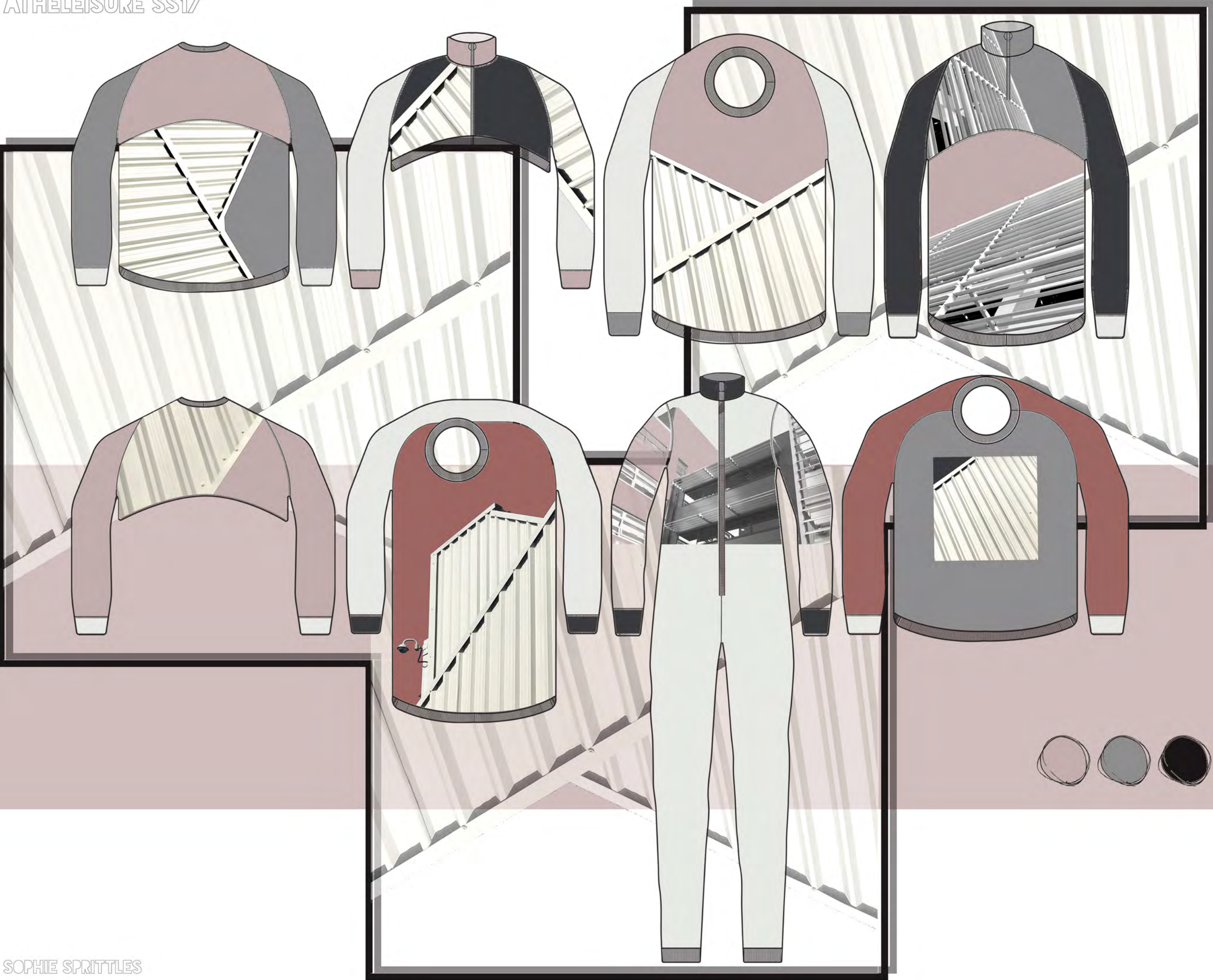
detachable bag
clutch bag/pouch style sized to fit essentials. curved shape with ring pull detail horizontal zip. attaches to garment with poppers for secure but easy removal and attachment.

luxe sweater
extreme oversized wide fit with raglan style yoke that passes through neckline which is positioned forward to allow the sweater to drape asymmetrically at hem. cuff and sweater rib detailing at neckline and hem. curved yoke at back.

TECHNICAL DESCRIPTION





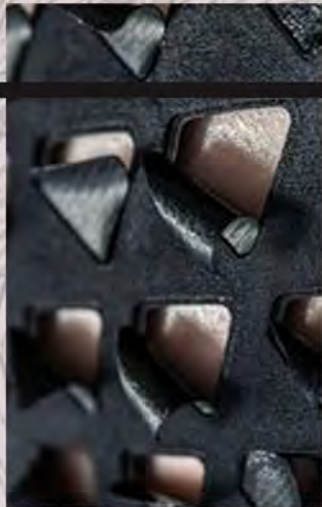


ATHELEISURE SS17



manipulated surface

biostructure



sports luxe detailing

sculptured pleats

caitlin price aw16



visual research

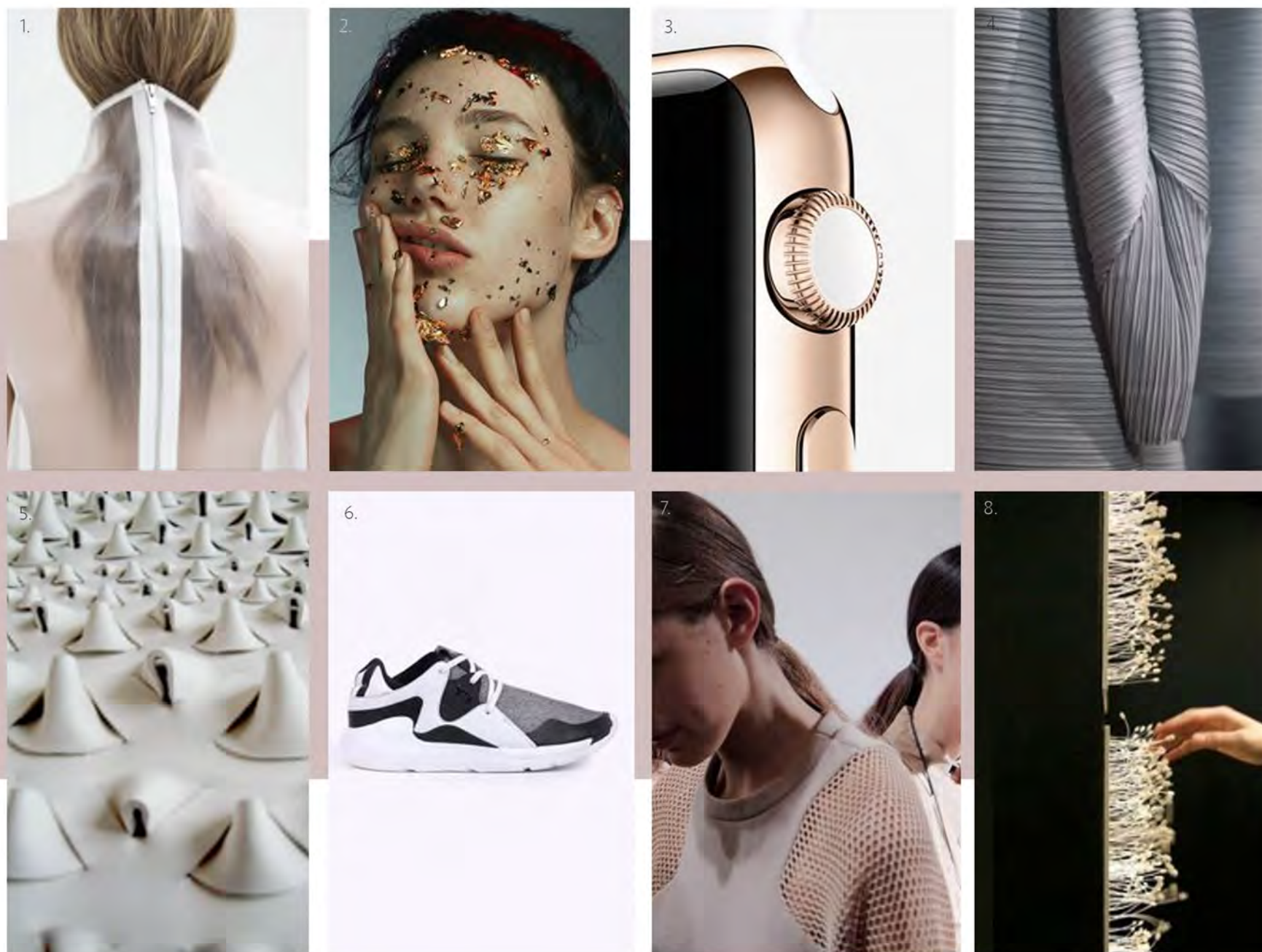
Autograph

M&S

1. veiled translucence 2. second skin 3. apple iWatch 4. Issey Miyake pleats please 5.three dimensional surface 6. Yohji Yamamoto Y-3 trainers 7. Christopher Raeburn SS14 8. sensorial touch

PAUSE

SS17



The increasingly obsolete and continuously regenerating trend cycle pauses in time to adjust to the recent global advances in technological and neurological development. The last decade has seen an astronomical progress in high-tech design and in 2017 we see these previously futuristic ideas become part of our daily lifestyle.

The focus shifts from reinterpreting the past to design in which form and function become obsessed with innovation. The fast paced modern lifestyle slows momentarily to reconnect with time and wellbeing. Fashion pauses to react to new the neoteric lifestyle and absorb technological changes. The result is design in which the futuristic way of life, technology and the body become one.

Pause takes inspiration from high end sport inspired fashion and luxury activewear garments. Construction and design details are borrowed from hi-tech performance wear and extreme condition garments which are reimagined in consideration of advanced garment technology and innovative materials which respond to the transitional daily lifestyle.

Pause is a multi sensory experience and alongside technological performance there is a consideration of luxury. Surface design becomes three dimensional - exploring embossed surfaces and sculptured ribs. Pause allows us to refocus on our surroundings: taking inspiration from our urban environment in the manipulation of photographic architectural surface.

Autograph

M&S



1. product description: pure linen
rustic jacket
price point: £75
sleeve: long sleeve
pockets: two patch pockets
fit: relaxed, loose
fabric: 100% linen, body lining 65% polyester
and 35% cotton, sleeve lining 100% polyester
colour: khaki
details: contrast lining, notched lapel detail
tailored collar, binding detail on inner CB
seam, chain loop hanging detail, autograph
branding metal disk

2. product description: sleeveless jacket
price point: £85
fastening: zip closure, hook and eye
sleeve: sleeveless
pockets: two welt pockets placed
symmetrically. artificial welt on breast
length: knee length
fit: tailored, fitted
fabric: 57% cotton 43% viscose
lining 100% polyester
colour: black
details: chain loop hanging detail autograph
branded disk. blazer style lapels, lined

3. product description: scarf print blouse
price point: £39.50
fastening: buttoned
sleeve: full length, flared
collar: shirt collar
fit: fitted, tailored silhouette
fabric: 100% polyester
colour: black mix
details: printed textile, dotted floral
geometric stripe and floral motif dots

4. product description: scarf print
belted shift dress
price point: £59
fastening: back zip
sleeve: three quarter
length: on the knee
fit: lose, relaxed cut
fabric: 100% polyester
colour: green mix
printed textile: dotted florals
and geometric stripe
details: waist tie, unlined

5. product description: striped wrap blouse
price point: £39.50
neckline: low v-neck with draped wrap style
fastening: pull on
sleeve: long, slightly shrunken
fit: tailored/fitted
colour: ivory mix
fabric: 100 polyester. unlined
details: printed textile
verticle stripes

6. product description: scarf print wide
leg trousers
price point: £45
fastening: pull on elasticated waist
fit: regular, relaxed leg
sit on waist
colour: black mx
fabric: 100% polyester
unlined
details: dotted floral motif, geometric
floral spots, stripe on hem



